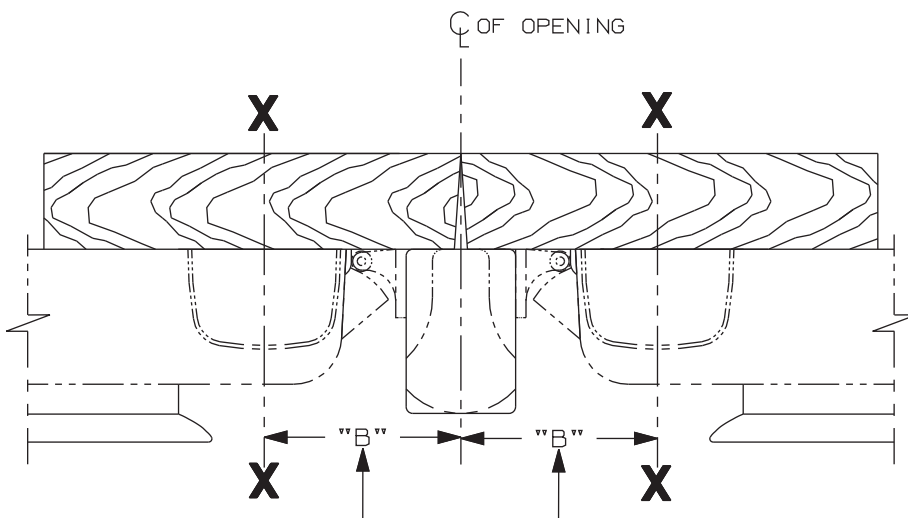
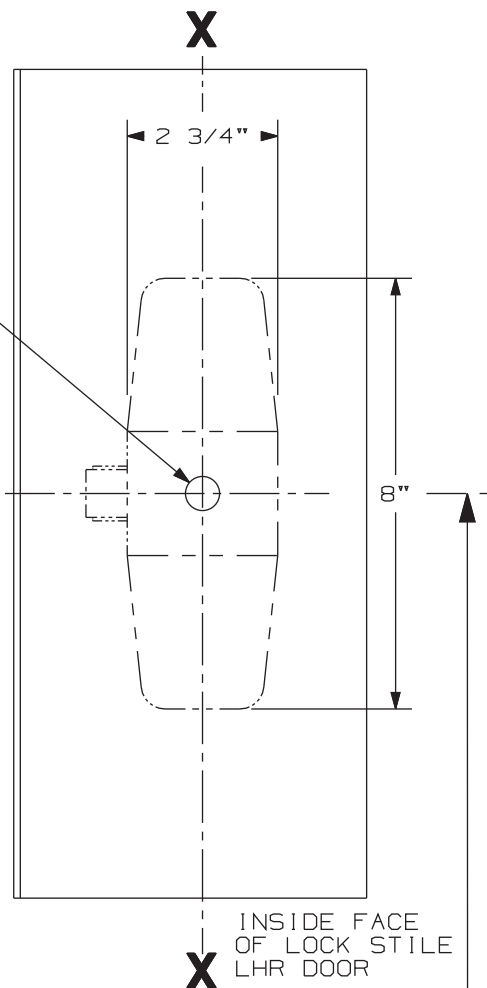


SINGLE DOOR INSTALLATION		
STRIKE	DIM. "B"	MIN. STILE
909	2 3/8"	4 1/2"

5/8" DIA THRU
TO CYLINDER
CUTOUT

CL DEVICE



DOUBLE DOOR INSTALLATION WITH VON DUPRIN MULLIONS			
MULLION	STRIKE	DIM. "B"	MIN. STILE
4954	909	3 3/8"	4 7/8"
9954	954	3 1/2"	5 "
5654	909	2 15/16"	4 3/8"

SINGLE DOOR OPENING
39 13/16" TO FINISHED FLOOR

DOUBLE DOOR OPENING
WITH VON DUPRIN MULLION
39 11/16" TO FINISHED FLOOR

REMOVE GLASS STOP OR BEAD
IN AREA OF DEVICE IF REQUIRED
UNLESS GBK IS USED.

LHR SHOWN
RHR OPPOSITE

FOR OUTSIDE TRIM PREPARATION, WHEN REQUIRED,
SEE ADDITIONAL TRIM TEMPLATE

NOTE:
MOUNTING HOLES TO BE PREPARED
AT INSTALLATION ON DOOR.

XP98/XP99 NL Series Rim Device Wood Door Application

VON DUPRIN®

NOTES: SEE MASTER SHEET #10001 FOR SUGGESTED REINFORCING

TEMPLATE
NUMBER:

W10612_a

DATE:
05-29-13