

Product Pricelist

U.S. & Canada Effective Date: May 20, 2024



Experience a safer
and more open world

SECURITRON

ASSA ABLOY



Product Pricelist

U.S. & Canada Effective date May 20, 2024

Securitron Products

Electromagnetic Locks

Intelligent Maglocks®

M380E EcoMag®	3
M680E EcoMag®	3

Delayed Egress Maglocks®

DEM680E EcoMag®	4
DEM680E EcoMag® Accessories	4

Durable Maglocks®

M32	4
M62	5
DM62	5
M82	5
M32, M62, M82 Brackets	6
M32, M62, M82 Lock Housing	7
M32, M62, M82 Dress Covers	7
M32, M62, M82 Accessories	7
M38	8
M68	8
Universal Maglock® Accessories	8

Recessed Maglocks®

M34R	10
------	----

Shear Aligning Maglocks®

SAM, SAM2	10
-----------	----

Cabinet Locks

MCL	11
M32-SS	11

Specialty Locks

GL1 Gate Lock	11
MM15 Electromechanical Maglock®	12

Electric Strikes

UNL, MUNL Electric Strikes	12
----------------------------	----

Keypads & Card Readers

Stand Alone Keypads

DK-12	13
-------	----

Keypad Systems

DK-16	13
DK-26	13

Aperio® Wireless Card Reader Kits

R100H	14
-------	----

Push Buttons & Egress Devices

XMS Exit Motion Sensor	15
------------------------	----

Emergency Exit Buttons

EEB	15
-----	----

Push Buttons

PB	15
PB2	16
PB3	16
PB4L	17
PB5	17
MK Mortise Key Switches	18
KP-1 Tubular Key Switches	18
WSS Wave Sense Switch	19
SP-1 Capacitive Switch	19

Egress Bars

DSB	20
TSB	20
EMB	21

Egress Handles

TSH	21
EMH	21

Power

AQD Series Power Supplies	22
AQL Series Power Supplies	24
BPSS Solar Power Supplies	25
AQE Single-Port PoE	26
PSP Plug-In Power Supplies	26
Additional Power Products	27

Power Transfers

CEPT Concealed Electrical Power Transfers	28
SEPT Square-Cut Electrical Power Transfers	28
EPT Electrical Power Transfers	29
EH Electric Hinges	29
TSB-C Door Cords	29

Accessories

DT-7, PZ1, TM-2, TM-9 Timers & Alarms	30
BA-DPA Door Prop Alarm Monitoring	30
DPS Door Position Switches	30
MSS Magnetic High Security Door Position Switch	31
LM Latch Monitor Status Switch	31
RB-4, RLP Relay Boards & Logic Packs	31

Warranties | Terms & Conditions

Warranties, Terms & Conditions	32
--------------------------------	----



Electromagnetic Locks

M380E EcoMag® 600 lbs. Intelligent Magnalocks®

MODEL	DESCRIPTION	605	606	612	613E	628	629	630	BSP
M380EBD	BondSTAT, DPS	\$971	\$971	\$971	\$864	\$742	\$971	\$971	\$864
M380EBDX	BondSTAT, DPS, REX	\$1157	\$1157	\$1157	\$1050	\$926	\$1157	\$1157	\$1050



How to Order *Specify quantity and the following information. Order related products separately.*

MODEL SERIES	ACCESSORY OPTIONS	FINISH OPTIONS*	
M380EBD	X	- 606	
M380EBD 600 lbs with BondSTAT Monitor & Door Position Switch	(blank) No Accessory Options X PIR Request to Exit	628/US28 Satin Aluminum Clear 605/US3 Bright Brass 606/US4 Satin Brass 612/US10 Satin Bronze	613E Dark Oxidized Satin Bronze 629 Bright Stainless Steel 630 Satin Stainless Steel BSP Black Suede Powder

M680E EcoMag® 1,200 lbs. Intelligent Magnalocks®

MODEL	DESCRIPTION	605	606	612	613E	628	629	630	BSP
M680E	Standard Model					\$795			
M680EBD	BondSTAT, DPS	\$1077	\$1077	\$1077	\$971	\$847	\$1077	\$1077	\$971
M680EBDX	BondSTAT, DPS, REX	\$1263	\$1263	\$1263	\$1157	\$1031	\$1263	\$1263	\$1157



How to Order *Specify quantity and the following information. Order related products separately.*

MODEL SERIES	MONITORING OPTIONS	ACCESSORY OPTIONS	FINISH OPTIONS*	
M680E	BD	X	- 606	
M680E (1,200 lbs)	(blank) No Monitoring BD BondSTAT Monitor & Door Position Switch	(blank) No Accessory Options X PIR Request to Exit	628/US28 Satin Aluminum Clear 605/US3 Bright Brass 606/US4 Satin Brass 612/US10 Satin Bronze	613E Dark Oxidized Satin Bronze 629 Bright Stainless Steel 630 Satin Stainless Steel BSP Black Suede Powder

DEM680E EcoMag® 1,200 lbs. Delayed Egress Magnalocks®

MODEL	DESCRIPTION	605	606	612	613E	628	629	630	BSP
DEM680E	Standard Model (Supports HUGS)	\$1698	\$1698	\$1698	\$1591	\$1456	\$1698	\$1698	\$1591
DEM680E-CA15S	California 15 Second Compliant	\$1698	\$1698	\$1698	\$1591	\$1456	\$1698	\$1698	\$1591
DEM680E-CA30S	California 30 Second Compliant	\$1698	\$1698	\$1698	\$1591	\$1456	\$1698	\$1698	\$1591
DEM680E-CH	Chicago Compliant	\$1698	\$1698	\$1698	\$1591	\$1456	\$1698	\$1698	\$1591



How to Order

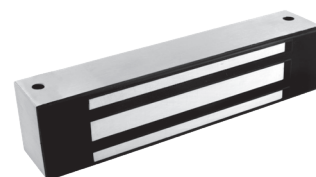
MODEL SERIES	TIMING OPTIONS	FINISH OPTIONS
DEM680E		- 606
Delayed Egress M680 EcoMag	(blank) Standard Model (Supports HUGS)	628 Satin Aluminum Clear
		605 Bright Brass
	-CA15S California 15 Second Compliant	606 Satin Brass
		612 Satin Bronze
	-CA30S California 30 Second Compliant	613E Dark Oxidized Satin Bronze
		629 Bright Stainless Steel
	-CH Chicago Compliant	630 Satin Stainless Steel
		BSP Black Suede Powder

M680E Accessories

MODEL	DESCRIPTION	BK	CL
ASB-680	Aluminum Spacer Bracket for M680	\$142	\$141
CWB-680	Concrete/Wood Bracket for M680	\$142	\$141
GDHB-680	Glass Door Header Bracket for M680	\$158	\$156

M32 600 lbs. Durable Magnalocks®

ITEM	DESCRIPTION	PRICE
M32	No Monitoring	\$442
M32B	BondSTAT Monitor	\$565
M32BD	BondSTAT Monitor & Door Position Switch	\$634
M32D	Door Position Switch	\$522
M32F	Face Drilled, No Monitoring	\$442
M32FB	Face Drilled, BondSTAT Monitor	\$565
M32FBD	Face Drilled, BondSTAT Monitor & Door Position Switch	\$634
M32FD	Face Drilled, Door Position Switch	\$522

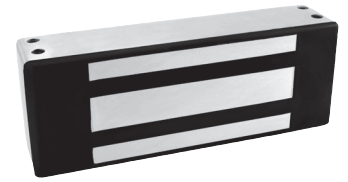


How to Order *Specify quantity and the following information. Order related products separately.*

MODEL SERIES	MOUNTING METHOD	MONITORING OPTIONS	STRIKE PLATE OPTIONS
M32		BD	-SS
M32 (600 lbs)	(blank) Direct Mount	(blank) No Monitoring	(blank) Standard Strike
	F Face Drilled	B BondSTAT Monitor	SS Split Strike (Add \$148)*
		D Door Position Switch	SASM Shock Absorbing Strike Mount (Add \$97)
		BD BondSTAT Monitor & Door Position Switch	

*D and BD monitoring options not available with (SS) Split Strike option.

M62 1,200 lbs. Durable Magnalocks®



ITEM	DESCRIPTION	PRICE
M62	No Monitoring	\$565
M62B	BondSTAT Monitor	\$688
M62BD	BondSTAT Monitor & Door Position Switch	\$757
M62D	Door Position Switch	\$646
M62F	Face Drilled	\$565
M62FB	Face Drilled, BondSTAT Monitor	\$688
M62FBD	Face Drilled, BondSTAT Monitor & Door Position Switch	\$757
M62FD	Face Drilled, Door Position Switch	\$646
M62G	Gate Conduit	\$602
M62GB	Gate Conduit, BondSTAT Monitor	\$726
M62GBD	Gate Conduit, BondSTAT Monitor & Door Position Switch	\$798
M62GD	Gate Conduit, Door Position Switch	\$686
M62FG	Face Drilled, Gate Conduit	\$601
M62FGB	Face Drilled, Gate Conduit, BondSTAT Monitoring	\$724
M62FGBD	Face Drilled, Gate Conduit, BondSTAT Monitoring & Door Position Switch	\$796
M62FGD	Face Drilled, Gate Conduit, Door Position Switch	\$688
M62FG-EX	Face Drilled, Gate Conduit for Hazardous Locations	\$601
M62FGB-EX	Face Drilled, Gate Conduit with BondSTAT Monitoring for Hazardous Locations	\$703
M62FGBD-EX	Face Drilled, Gate Conduit with BondSTAT Monitoring & Door Position Switch for Hazardous Locations	\$773
M62FGD-EX	Face Drilled, Gate Conduit with Door Position Switch for Hazardous Locations	\$688
M62G-EX	Gate Conduit for Hazardous Locations	\$602
M62GB-EX	Gate Conduit with BondSTAT Monitoring for Hazardous Locations	\$705
M62GBD-EX	Gate Conduit with BondSTAT Monitoring & Door Position Switch for Hazardous Locations	\$798
M62GD-EX	Gate Conduit with Door Position Switch for Hazardous Locations	\$665

NEW

How to Order Specify quantity and the following information. Order related products separately.

MODEL SERIES	MOUNTING METHOD	MONITORING OPTIONS	STRIKE PLATE OPTIONS
M62	FG	BD	-SS
M62 (1200 lbs)	(blank) Direct Mount F Face Drilled G Gate Conduit	(blank) No Monitoring B BondSTAT Monitor D Door Position Switch BD BondSTAT Monitor & Door Position Switch	(blank) Standard Strike OS Offset Strike SS Split Strike (Add \$148)* SASM Shock Absorbing Strike Mount (Add \$97) EX Hazardous Locations

*D and BD monitoring options not available with (SS) Split Strike option.

DM62 Double 1,200 lbs. Durable Magnalocks®

ITEM	DESCRIPTION	PRICE
DM62	12/24 VDC	\$1210
DM62-OS	12/24 VDC, Offset Strike	\$1210
DM62B	12/24 VDC, MBS	\$1475
DM62B-OS	12/24 VDC, MBS, Offset Strike	\$1475
DM62BD	12/24 VDC, MBS, DPS	\$1628
DM62D	12/24 VDC, DPS	\$1392



Accessories

ITEM	DESCRIPTION	PRICE
ASCWB-DM62CL	Alum 1-1/2" Spacer — Concrete/Wood Bracket, DM62, Clear	\$213

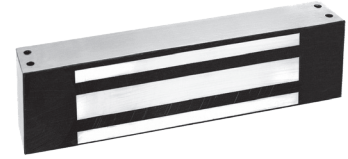
How to Order

Specify quantity and the following information. Order related products separately.

MODEL SERIES	MONITORING OPTIONS	STRIKE PLATE OPTIONS
DM62	BD	- OS
DM62	(blank) No Monitoring B BondSTAT Monitor D Door Position Switch	(blank) Standard Strike OS Offset Strike

M82 1,800 lbs. Durable Magnalocks®

ITEM	DESCRIPTION	PRICE
M82B	BondSTAT Monitor	\$791
M82BD	BondSTAT Monitor & Door Position Switch	\$863
M82FB	Face Drilled, BondSTAT Monitor	\$791
M82FBD	Face Drilled, BondSTAT Monitor & Door Position Switch	\$863
M82GB	Gate Conduit, BondSTAT Monitor	\$833
M82GBD	Gate Conduit, BondSTAT Monitor & Door Position Switch	\$902
M82FGB	Face Drilled, Gate Conduit, BondSTAT Monitor	\$834
M82FGBD	Face Drilled, Gate Conduit, BondSTAT Monitor & Door Position Switch	\$904



How to Order *Specify quantity and the following information. Order related products separately.*

MODEL SERIES	MOUNTING METHOD	MONITORING OPTIONS	STRIKE PLATE OPTIONS
M82	FG	BD	-SS
M82 (1800 lbs)	(blank) Direct Mount F Face Drilled G Gate Conduit	B BondSTAT Monitor BD BondSTAT Monitor & Door Position Switch	(blank) Standard Strike OS Offset Strike SS Split Strike (Add \$148)* SASM Shock Absorbing Strike Mount (Add \$97)
<i>*D and BD monitoring options not available with (SS) Split Strike option.</i>			

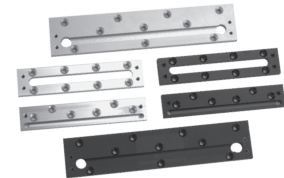
Aluminum Frame Spacer Bracket

MODEL	DESCRIPTION	BK	CL
ASB-32	For M32	\$77	\$57
ASB-62	For M62	\$78	\$57
ASB-82	For M82	\$108	\$93
ASB-680	Aluminum Spacer Bracket for M680	\$156	\$141



Concrete/Wood Bracket

MODEL	DESCRIPTION	BK	CL
CWB-32	For M32	\$87	\$73
CWB-62	For M62	\$97	\$82
CWB-82	For M82	\$117	\$102
CWB-680	Concrete/Wood Bracket for M680	\$156	\$141



Adjustable Z-Bracket

MODEL	DESCRIPTION	BK	CL	SS
ZA-32/62	For M32 and M62	\$218	\$201	\$228
ZA-82	For M82	\$263	\$242	\$273



How to Order

Specify quantity and the following information. Order related products separately.

BRACKET TYPE	MODEL SERIES	STRIKE PLATE OPTIONS
ASB	-32	BK
ASB Aluminum Frame Spacer Bracket	32	BK Black Anodized
CWB Concrete/Wood Bracket	62	CL Clear Anodized
ZA Adjustable Z-Bracket	82	SS Satin Stainless

NOTE: SS only available with ZA Bracket

Lock Housing

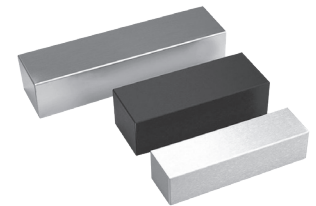
ITEM	DESCRIPTION	PRICE
HHD-32	Lock Housing for M32 - Dbl. Horizontal	\$1365
HHD-62	Lock Housing for M62 - Dbl. Horizontal	\$1470
HHD-82	Lock Housing for M82 - Dbl. Horizontal	\$1575
HHSL-32	Lock Housing for M32 - SLR Horizontal	\$1219
HHSL-62	Lock Housing for M62 - SLR Horizontal	\$1130
HHSR-32	Lock Housing for M32 - SRR Horizontal	\$1219
HHSR-62	Lock Housing for M62 - SRR Horizontal	\$1130
HVD-32	Lock Housing for M32 - Dbl. Vertical	\$1400
HVD-62	Lock Housing for M62 - Dbl. Vertical	\$1500
HVD-82	Lock Housing for M82 - Dbl. Vertical	\$1600

HHD Max Length 96", HHSL Max Length 48", HHSR Max Length 48", HVD Max Length 96"



Dress Covers

MODEL	DESCRIPTION	BK	BP	CL	SP
DC-32	For M32	\$59	\$153	\$58	\$144
DC-62	For M62	\$59	\$153	\$58	\$144
DC-82	For M82	\$74	\$160	\$66	\$152
DDC-32	Double — For M32	\$158		\$158	
DDC-62	Double — For M62	\$158		\$158	



How to Order

Specify quantity and the following information. Order related products separately.

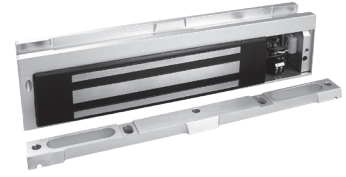
DRESS COVER	MODEL	FINISH
DC	- 32	BK
DC Dress Cover	32	BK Black Anodized
DDC Double Dress Cover	62	BP Brass Polished
(available in models 32 & 62 in BK and CL finishes only)	82	CL Clear Anodized
		SP Stainless Polished

M32, M62, M82 Accessories

ITEM	DESCRIPTION	PRICE
AOS-62	Offset Strike Plate for M62	\$152
AOS-62D	Offset Strike Plate for M62D	\$188
AOS-82	Offset Strike Plate for M82	\$200
APS-32	Strike Plate for M32	\$143
APS-62	Strike Plate for M62	\$160
APS-82	Strike Plate for M82	\$186
ASS-32	Strike Plate for M32— Split Set with Fasteners & Sex Bolt	\$197
ASS-62	Strike Plate for M62— Split Set with Fasteners & Sex Bolt	\$226
ASS-82	Strike Plate for M82— Split Set with Fasteners & Sex Bolt	\$251
EASB-250	Energy Absorbing Bolt — 1/4" Spacer Kit	\$60
EASB-32	Energy Absorbing Sex Bolt for M32	\$317
EASB-62	Energy Absorbing Sex Bolt for M62	\$467
EASB-82	Energy Absorbing Sex Bolt for M82	\$510
MTK-32-62	Magnetic, metal marking template that streamlines installation for the M32 and M62 electromagnetic locks	\$94
SASM	Shock Absorbing Strike Mount for M32, M62, M82	\$97
SB-1	Sex Bolt Replacement, Clear	\$18
SB-1-03	Sex Bolt Replacement, Polished Brass	\$41
SB-1-10B	Sex Bolt Replacement, Oil-Rubbed Bronze	\$41
TDK-1	Thick Door Kit	\$36

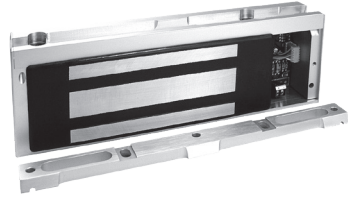
M38 600 lbs. Durable Magnalocks®

ITEM	DESCRIPTION	PRICE
M38	12/24 VDC	\$584
M38D	12/24 VDC, DPS	\$680
M38DL	12/24 VDC, DPS, LED	\$721
M38DLS	12/24 VDC, DPS, LED, Senstat	\$818
M38DLST	12/24 VDC, DPS, LED, Senstat, Tamper	\$886
M38DS	12/24 VDC, DPS, Senstat	\$775
M38LS	12/24 VDC, LED, Senstat	\$721



M68 1,200 lbs. Durable Magnalocks®

ITEM	DESCRIPTION	PRICE
M68	12/24 VDC	\$727
M68D	12/24 VDC, DPS	\$823
M68DL	12/24 VDC, DPS, LED	\$864
M68DLS	12/24 VDC, DPS, LED, Senstat	\$961
M68DLST	12/24 VDC, DPS, LED, Senstat, Tamper	\$1029
M68DS	12/24 VDC, DPS, Senstat	\$917
M68LS	12/24 VDC, LED, Senstat	\$864
M68S	12/24 VDC, Senstat	\$823



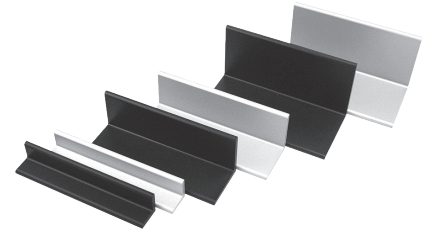
M38, M68 Accessories

ITEM	DESCRIPTION	PRICE
DC-38SP	Stainless Polished Dress Cover for M38	\$144
DC-68SP	Stainless Polished Dress Cover for M68	\$144
TJ-38CL	Clear Anodized In-Swing Door Kit for M38	\$253
TJ-68CL	Clear Anodized In-Swing Door Kit for M68	\$253

Universal Magnalock Accessories

Header Extension Brackets

MODEL	DESCRIPTION	BK	CL
HEB-1xx-8	1" x 1" x 8"	\$65	\$54
HEB-1xx-12	1" x 1" x 12"	\$77	\$59
HEB-2xx-8	2" x 2" x 8"	\$85	\$71
HEB-2xx-12	2" x 2" x 12"	\$88	\$77
HEB-3xx-8	3" x 3" x 8"	\$98	\$87
HEB-3xx-12	3" x 3" x 12"	\$109	\$92
HEB-3G	3" x 3" x 8" for Glass Door	\$104	



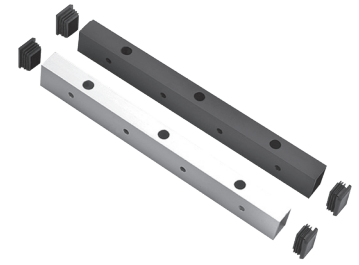
How to Order

Specify quantity and the following information. Order related products separately.

MODEL	SIZE	FINISH	SIZE
HEB	-1	BK	-8
HEB Header	1 1" x 1"	BK Black Anodized	8
Extension	2 2" x 2"	CL Clear Anodized	12
	3 3" x 3"		

Universal Header Brackets

MODEL	DESCRIPTION	BK	CL
UHB-xx-8	8" Header Bracket	\$113	\$96
UHB-xx-12	12" Header Bracket	\$157	\$138



How to Order

Specify quantity and the following information. Order related products separately.

MODEL	FINISH	SIZE
UHB	BK	-8
UHB Universal Header Extension	BK Black Anodized CL Clear Anodized	8" 12"

Stop Filler Plates

MODEL	DESCRIPTION	BK	CL
SFP-1/2-xx-8	1/2" x 1-1/4" x 8"	\$51	\$43
SFP-1/2-xx-12	1/2" x 1-1/4" x 12"	\$57	\$46
SPF-1/4-xx-8	1/4" x 1-1/4" x 8"	\$51	\$43
SFP-1/4-xx-12	1/4" x 1-1/4" x 12"	\$57	\$46
SFP-3/8-xx-8	3/8" x 1-1/4" x 8"	\$51	\$43
SFP-3/8-xx-12	3/8" x 1-1/4" x 12"	\$57	\$46
SFP-5/8-xx-8	5/8" x 1-1/4" x 8"	\$51	\$43
SFP-5/8-xx-12	5/8" x 1-1/4" x 12"	\$57	\$46



How to Order

Specify quantity and the following information. Order related products separately.

MODEL	SIZE	FINISH	SIZE
SFP	-1/2	BK	-8
SFP Stop Filler Plate	1/2" 1/4" 3/8" 5/8"	BK Black Anodized CL Clear Anodized	8" 12"

Additional Accessories

ITEM	DESCRIPTION	PRICE
AKG	Adhesive Kit for GDB permanently bonds to the glass using a special industrial adhesive	\$226
DCP-12X3	Dress Cover Plate, 12" x 3" for larger strikes	\$42
GDB	Glass Door Bracket permits strike plate installation on a solid glass door	\$89
IK	This convenient, cost effective kit contains everything an installer needs to achieve professional, high quality Magnetic Lock installations.	\$729



M34R 500 lbs. Recessed Magnalocks®

ITEM	DESCRIPTION	PRICE
M34R	12/24 VDC, Recessed	\$510
M34RB	12/24 VDC, Recessed, MBS	\$644
M34RBD	12/24 VDC, Recessed, MBS, DPS	\$721
M34RD	12/24 VDC, Recessed, DPS	\$601



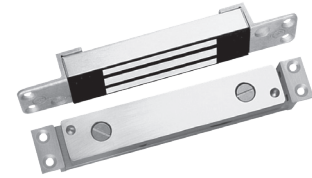
SAM 1,200 lbs. Shear Aligning Magnalocks®

ITEM	DESCRIPTION	PRICE
SAM	12/24 VDC, Shear Aligning	\$1146
SAMB	12/24 VDC, Shear Aligning, MBS	\$1250
SAMBD	12/24 VDC, Shear Aligning, MBS, DPS	\$1320
SAMD	12/24 VDC, Shear Aligning, DPS	\$1221
SAMN	12/24 VDC, Shear Aligning with Narrow Strike Plate	\$1158



SAM2-24 600 lbs. Mini Shear Magnalocks®

ITEM	DESCRIPTION	PRICE
SAM2-24	24 VDC, Shear Aligning	\$867
SAM2C-24	24 VDC, Shear Aligning, MBS	\$913



SAM Accessories

ITEM	DESCRIPTION	PRICE
SMLS	Surface Mount Housing Lock — Shear	\$220
SMSS	Surface Mount Housing Strike — Shear	\$213
SWB-03	SAM Wood Bracket — Brass Polished	\$300
SWB-10B	SAM Wood Bracket — Oil Rubbed Bronze	\$301
SWB-26D	SAM Wood Bracket — Satin Stainless	\$118

NOTE: Not for use with SAM2-24 or SAMC2-24

Cabinet Locks

MCL 180 lbs. Cabinet Magnalocks®

ITEM	DESCRIPTION	PRICE
MCL-24	24 VDC	\$289



M32-SS 600 lbs. Cabinet Magnalocks®

ITEM	DESCRIPTION	PRICE
M32-SS	Standard — No Monitoring, Split Strike	\$590
M32B-SS	BondSTAT monitoring, Split Strike	\$713



Specialty Locks

GL1 Specialty Gate Locks

ITEM	DESCRIPTION	PRICE
GL1-FL	Gate Lock, 12/24 VDC, Standard Fail Locked	\$472
GL1-FLM	Gate Lock, 12/24 VDC, Fail Locked Monitored	\$488
GL1-FS	Gate Lock, 12/24 VDC, Standard Fail Safe	\$472
GL1-FSM	Gate Lock, 12/24 VDC, Fail Safe Monitored	\$488

*Cylinder not available for Fail-Safe Version "FS" or "FSM"

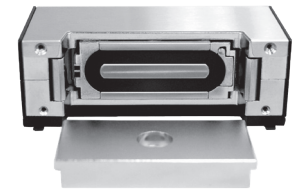
GL1 Accessories

ITEM	DESCRIPTION	PRICE
FMB9-4	Post Shim Kit for Flex Mount Brackets — (Set of 4)	\$31
FMK-SL	Flex Mount Kit for Sliding Gate	\$143
FMK-SW	Flex Mount Kit for Swinging Gate	\$177
GMC	Gate Lock Mortise Cylinder (for use with FL Models only)	\$47



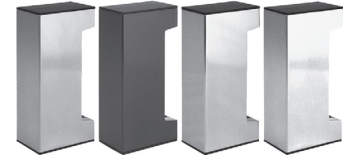
MM15 Specialty Electromechanical Magnalock

ITEM	DESCRIPTION	PRICE
MM15	12/24 V, AC/DC	\$630
MM15DT	12/24 V, AC/DC, DPS, Tamper Switch	\$770
MM15G	12/24 V, AC/DC, Gate Conduit	\$700
MM15GDT	12/24 V, AC/DC, Gate Conduit, DPS, Tamper Switch	\$810



MM15 Dress Cover

MODEL	BK	BP	BS
DC-MM15	\$52	\$132	\$144

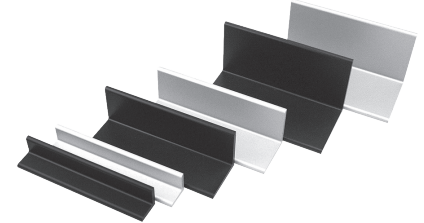


MM15 Tamper Shield

ITEM	PRICE
MM15-TS	\$52

MM15 Brackets

MODEL	DESCRIPTION	BK	CL
HEB-1xx-MM15	1" Header Extension Bracket	\$64	\$49
HEB-2xx-MM15	2" Header Extension Bracket	\$64	\$49
HEB-3xx-MM15	3" Header Extension Bracket	\$64	\$49
SFP-1/2xxMM15	1/2" Stop Filler Plate	\$55	\$43
SFP-3/8xxMM15	3/8" Stop Filler Plate	\$55	\$43
SFP-5/8xxMM15	5/8" Stop Filler Plate	\$55	\$43
Z-MM15	Z-Bracket	\$153	\$135



How to Order Specify quantity and the following information. Order related products separately.

MODEL	SIZE	FINISH	MODEL	SIZE	FINISH
HEB	-1	BK-MM15	SFP	-1/2	BK-MM15
HEB Header Extension	1 1" x 1"	BK-MM15 Black Anodized	SFP Stop Filler Plate	1/2"	BK-MM15 Black Anodized
	2 2" x 2"	CL-MM15 Clear Anodized		3/8"	CL-MM15 Clear Anodized
	3 3" x 3"			5/8"	

Electric Strikes

Securiton UNL Electric Strike for Latchbolt Locks

ITEM	DESCRIPTION	PRICE
UNL-12	UnLatch for Cylindrical Locks - 12VDC	\$601
UNL-24	UnLatch for Cylindrical Locks - 24VDC	\$601
UNL-12-10B	UnLatch for Cylindrical Locks - 12VDC, Oil Rubbed Bronze	\$669
UNL-24-10B	UnLatch for Cylindrical Locks - 24VDC, Oil Rubbed Bronze	\$669

Securiton MUNL Electric Strike for Latchbolt Locks

ITEM	DESCRIPTION	PRICE
MUNL-12	UnLatch for Mortise Lock- 12VDC	\$837
MUNL-24	UnLatch for Mortise Lock- 24VDC	\$837
MUNL-12-10B	UnLatch for Mortise Lock- 12VDC, Oil Rubbed Bronze	\$899
MUNL-24-10B	UnLatch for Mortise Lock- 24VDC, Oil Rubbed Bronze	\$899
MUNL-12-US3	UnLatch for Mortise Lock- 12VDC, Bright Brass	\$857
MUNL-24-US3	UnLatch for Mortise Lock- 24VDC, Bright Brass	\$857



Accessories

ITEM	DESCRIPTION	PRICE
FSUNL-12	Fail Safe/Fail Secure UnLatch Module, 12 VDC	\$162
FSUNL-24	Fail Safe/Fail Secure UnLatch Module, 24 VDC	\$162

Keypads & Card Readers

DK-12 Stand Alone Keypad

ITEM	DESCRIPTION	PRICE
DK-12	Digital Keypad System with Illuminated keys — Single Gang	\$230



DK-16 Keypad System

ITEM	DESCRIPTION	PRICE
DK-16	Keypad and Controller — Indoor, Single Gang	\$502
DK-16P	Keypad only — Indoor, Single Gang	\$273



DK-26 Keypad System

MODEL	DESCRIPTION	BK	SS
DK-26	Keypad and Controller — Narrow Stile	\$513	\$499
DK-26P	Keypad only — Narrow Stile	\$272	\$254



R100 Aperio® Card Reader Factory Paired with Wiegand Hub

ITEM	DESCRIPTION	PRICE
R100H-IPS-B	Aperio® Wireless Card Reader Factory Paired with AH20 (1:1) Wiegand Hub, Black	\$977

Accessories

ITEM	DESCRIPTION	PRICE
R100-DPK	R100 Aperio® Wireless Card Reader Dress Cover, Aluminum	\$30
ACC10	RFID test credentials	\$35
APD10USB	Used to configure both the Aperio product and/or Aperio hubs via the Program Application software.	\$667

R100 Demo Mount

ITEM	DESCRIPTION	PRICE
DEMO-R100-IPS-B	R100 Aperio® Wireless Card Reader Demo Mount With HID multiCLASS SE Card Technology, HID NFC Mobile Access Enabled	\$1036



Push Buttons & Egress Devices

XMS Request to Exit Motion Sensor

ITEM	DESCRIPTION	PRICE
XMS	Passive Infrared Request to Exit Device	\$267



EEB Emergency Exit Push Buttons

ITEM	DESCRIPTION	PRICE
EEB2	Momentary, SPDT, Single Gang, Green/Red/Blue/Handicap, 30 Sec. Timer	\$165
EEB3N	Momentary, SPDT, Narrow, Green/Red, 30 Sec. Timer	\$165



Accessories

ITEM	DESCRIPTION	PRICE
PB2-LK	2" Button, Illumination Kit for PB2E, PB5E, EEB2 Series Push Button	\$35
PB3-LK	Illumination Kit, Green/Red for PB3E/EEB3N Series	\$41

PB Exit Push Buttons

ITEM	DESCRIPTION	PRICE
PB	1 1/2" button, Illuminated, Momentary, DPST, Single Gang, Green/Red Lens	\$183
PBA	1 1/2" button, Illuminated, Alternate, DPST, Single Gang, Green/Red Lens	\$183



Accessories

ITEM	DESCRIPTION	PRICE
WBB	Wall Mounted, Weatherized, Single Gang Box	\$55
WCC	Wall Mounted, Weather Cover, Single Gang Box	\$76

PB2 Exit Push Buttons

ITEM	DESCRIPTION	PRICE
PB2	2" Button, Illuminated, Momentary, Single Gang, Green/Red/Handicap	\$117
PB22	2" Button, Illuminated, Momentary, DPDT, Single Gang, Green/Red/Handicap	\$183
PB2E	2" Button, Non-Illuminated, Momentary, Single Gang, SPDT, Green/Red/Handicap	\$86

Accessories

ITEM	DESCRIPTION	PRICE
PB2-LK	2" Button, Illumination Kit for PB2E, PB5E, EEB2 Series Push Button	\$35
WBB	Wall Mounted, Weatherized, Single Gang Box	\$55
WCC	Wall Mounted, Weather Cover, Single Gang Box	\$76



PB3 Push Buttons

ITEM	DESCRIPTION	PRICE
PB3	3/4" Rectangle Button, Illuminated, Momentary, DPST/DPDT, Single Gang, Green/Red Lens	\$125
PB3A	3/4" Rectangle Button, Illuminated, Alternate, DPST/DPDT, Single Gang, Green/Red Lens	\$125
PB3AN	3/4" Rectangle Button, Illuminated, Alternate, DPST/DPDT, Narrow, Green/Red Lens	\$125
PB3E	3/4" Rectangle Button, Non-Illuminated, Momentary, DPST/DPDT, Single Gang, Green/Red Lens	\$95
PB3EA	3/4" Rectangle Button, Non-Illuminated, Alternate, DPST/DPDT, Single Gang, Green/Red Lens	\$95
PB3EAN	3/4" Rectangle Button, Non-Illuminated, Alternate, DPST/DPDT, Narrow, Green/Red Lens	\$95
PB3EAR	3/4" Rectangle Button, Non-Illuminated, Remote, Alternate, DPST/DPDT, Surface Mount Green/Red Lens	\$95
PB3EN	3/4" Rectangle Button, Non-Illuminated, Momentary, DPST/DPDT, Narrow, Green/Red Lens	\$95
PB3ER	3/4" Rectangle Button, Non-Illuminated, Remote, Momentary, DPST/DPDT, Surface Mount Green/Red Lens	\$95
PB3N	3/4" Rectangle Button, Illuminated, Momentary, DPST/DPDT, Narrow, Green/Red Lens	\$125

Accessories

ITEM	DESCRIPTION	PRICE
PB3-LK	Illumination Kit, Green/Red for PB3E/EEB3N Series	\$41
WBB	Wall Mounted, Weatherized, Single Gang Box	\$55
WCC	Wall Mounted, Weather Cover, Single Gang Box	\$76



PB4L Push Buttons

ITEM	DESCRIPTION	PRICE
PB4L-2	1/2" Round Button, Green Illuminated Halo, Momentary, DPDT, Single Gang, Green/Red LED	\$158
PB4LA-2	1/2" Round Button, Green Illuminated Halo, Alternate, DPDT, Single Gang, Green/Red LED	\$158
PB4LAN-2	1/2" Round Button, Green Illuminated Halo, Alternate, DPDT, Narrow Stile, Green/Red LED	\$158
PB4LN-2	1/2" Round Button, Green Illuminated Halo, Momentary, DPDT, Narrow Stile, Green/Red LED	\$158



PB5 Push Buttons

ITEM	DESCRIPTION	PRICE
PB5	2" Round Button, Illuminated, Momentary, SPDT, Single Gang, Green/Red/Handicap	\$145
PB5E	2" Round Button, Non-Illuminated, Momentary, SPDT, Single Gang, Green/Red/Handicap	\$110



Accessories

ITEM	DESCRIPTION	PRICE
PB2-LK	2" Button, Illumination Kit for PB2E, PB5E, EEB2 Series Push Button	\$35
WBB	Wall Mounted, Weatherized, Single Gang Box	\$55
WCC	Wall Mounted, Weather Cover, Single Gang Box	\$76

MK Mortise Key Switches

ITEM	DESCRIPTION	PRICE
MK	Momentary, SPDT, Single Gang, Green/Red LED	\$159
MK2	Momentary, DPDT, Single Gang, Green/Red LED	\$186
MKA	Alternate, SPDT, Single Gang, Green/Red LED	\$159
MKA2	Alternate, DPDT, Single Gang, Green/Red LED	\$186
MKAN	Alternate, SPDT, Narrow, Green/Red LED	\$159
MKAN2	Alternate, DPDT, Narrow, Green/Red LED	\$186
MKN	Momentary, SPDT, Narrow, Green/Red LED	\$159
MKN2	Momentary, DPDT, Narrow, Green/Red LED	\$186
MKPZ	Momentary, SPDT, Double Gang, Green/Red LED, Audible	\$239
MKAPZ	Alternate, SPDT, Double Gang, Green/Red LED, Audible	\$239



MK Accessories

ITEM	DESCRIPTION	PRICE
MKC-KA	Mortise Cylinder for MK Series – Keyed Alike	\$97
MKC-KD	Mortise Cylinder for MK Series – Keyed Differently	\$97
MKS	Momentary, Switch Only	\$41
MKS2	DPDT Momentary, Switch Only	\$67
MKSA	Alternate, Switch Only	\$41
MKSA2	DPDT Alternate, Switch Only	\$67

KP-1 Tubular Key Switches

ITEM	DESCRIPTION	PRICE
KP1	Momentary Switch	\$200
KP1A	Alternate Switch	\$200



WSS Wave Sense® Hands-Free Activation Switch

ITEM	DESCRIPTION	PRICE
WSS-WSD	Wave Sense Switch, White Single/ Double Gang Faceplate	\$443



Accessories

ITEM	DESCRIPTION	PRICE
WBB	Wall Mounted, Weatherized, Single Gang Box	\$55
WCC	Wall Mounted, Weather Cover, Single Gang Box	\$76

NOTE: WBB & WCC accessories are only compatible with the WSS-WSD Single Gang Faceplate option

SP-1 Capacitive Touch Sense® Switch

ITEM	DESCRIPTION	PRICE
SP-1	Touch Sense® Switch	\$243
SP-1L	Label Touch Switch [SP-1]	\$12
SP-1LH	Label Touch Switch [SP-1] — Handicap Decal	\$12



DSB Dual Sense® Egress Bar

MODEL	DESCRIPTION	BK	CL
DSB	Non-Illuminated, 36" (Standard), 42", or 48"	\$633	\$610
DSB-xxI	Illuminated, 36" (Standard), 42", or 48"	\$839	\$812
EL-DSB	Electrolynx, Illuminated, 36" Only	\$674	\$655



Accessories

ITEM	DESCRIPTION	PRICE
DSB-TDM	Through Door Mounting Kit for DSB	\$22
TCP-BK	Touch Bar Cover Plates — Set of 2, Black Anodized	\$111
TCP-CL	Touch Bar Cover Plates — Set of 2, Clear Anodized	\$109

How to Order Specify quantity and the following information. Order related products separately.

CONNECTOR STYLE	MODEL SERIES	FINISH	ILLUMINATION	BAR LENGTH
EL	– DSB	– CL	I	42
(blank) No Connectors	DSB Dual Sense Bar	BK Black Anodized	(blank) Non Illuminated	(blank) 36" Standard Unit
EL Electrolynx Connectors		CL Clear Anodized	I Illuminated	42 42" Length 48 48" Length

NOTE: Not every combination above is possible. Please contact the factory if you need a combination of features not listed on this page.

TSB Touch Sense® Egress Bar

MODEL	DESCRIPTION	BK	CL
TSB	36" (Standard), 42", or 48"	\$576	\$538
TSB-xxT	Trailing Edge Timer [3 Sec.] — BK 36" only, CL 36" or 42"	\$576	\$538
EL-TSB	Electrolynx — 36" (Standard), 42", or 48"	\$600	\$561
DTSB	Dummy with End Caps & Fasteners — 36" (Standard), 42", or 48"	\$294	\$265



Accessories

ITEM	DESCRIPTION	PRICE
TSB-TDM	Through Door Mounting Kit for TSB	\$21
TCP-BK	Touch Bar Cover Plates — Set of 2, Black Anodized	\$111
TCP-CL	Touch Bar Cover Plates — Set of 2, Clear Anodized	\$109

How to Order Specify quantity and the following information. Order related products separately.

CONNECTOR STYLE	MODEL SERIES	FINISH	SPECIAL FEATURES	BAR LENGTH
EL	– TSB	– CL	T	– 42
(blank) No Connectors	TSB Touch Sense Bar	BK Black Anodized	T Trailing Edge Timer	(blank) 36" Standard Unit
EL Electrolynx Connectors		CL Clear Anodized		42" 48"

NOTE: Not every combination above is possible. Please contact the factory if you need a combination of features not listed on this page.

EMB Electromechanical Egress Bar

MODEL	DESCRIPTION	BK	CL
EMB	36" (Standard), 42", or 48"	\$348	\$327
WEMB	Weather Resistant, 36" (Standard), 42", or 48"	\$384	\$361



Accessories

ITEM	DESCRIPTION	PRICE
TCP-BK	Touch Bar Cover Plates — Set of 2, Black Anodized	\$111
TCP-CL	Touch Bar Cover Plates — Set of 2, Clear Anodized	\$109

How to Order Specify quantity and the following information. Order related products separately.

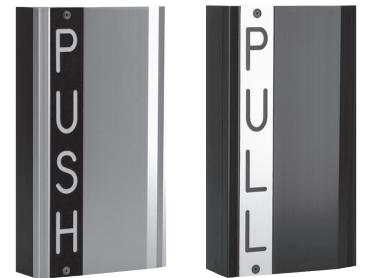
MODEL SERIES	FINISH	BAR LENGTH
EMB	– CL	– 48
EMB Electromechanical Bar	BK Black Anodized	(blank) 36" Standard Unit
WEMB Weather Resistant Electromechanical Bar	CL Clear Anodized	42" 48"

TSH Touch Sense® Handle

MODEL	DESCRIPTION	BK	CL
TSH	Push/Pull	\$567	\$557
EL-TSH	ElectroLynx — Push/Pull	\$603	\$592

How to Order Specify quantity and the following information. Order related products separately.

CONNECTOR STYLE	MODEL SERIES	FINISH
EL	– TSH	– CL
(blank) No Connectors	TSH Touch Sense Handle	BK Black Anodized
EL ElectroLynx Connectors		CL Clear Anodized

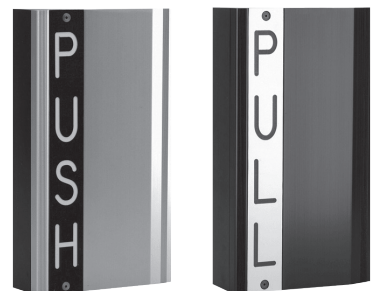


EMH Electromechanical Handle

MODEL	DESCRIPTION	BK	CL
EMH	Push/Pull	\$614	\$588
EL-EMH	ElectroLynx — Push/Pull		\$575

How to Order Specify quantity and the following information. Order related products separately.

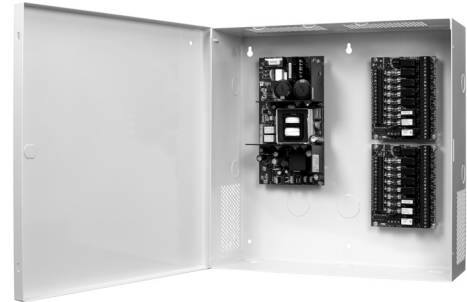
CONNECTOR STYLE	MODEL SERIES	FINISH
EL	– EMH	– CL
(blank) No Connectors	EMH Electromechanical Handle	BK Black Anodized
EL ElectroLynx Connectors		CL Clear Anodized



Power

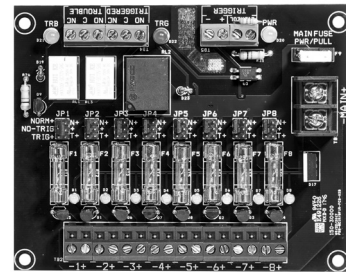
AQD Series Power Supplies with Enclosures

ITEM	DESCRIPTION	PRICE
AQD1	1 Amp, Dual Voltage Power Supply with enclosure	\$284
AQD2	2 Amp, Dual Voltage Power Supply with enclosure	\$335
AQD4	4 Amp, Dual Voltage Power Supply with enclosure	\$376
AQD6	6 Amp, Dual Voltage Power Supply with enclosure	\$418



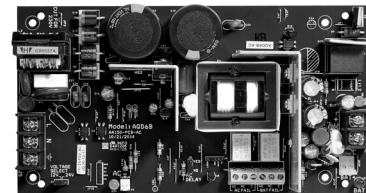
AQD Series Distribution Boards

ITEM	DESCRIPTION	PRICE
PDB-1R	Fire Trigger / Relay Interface Board	\$52
PDB-4F2	4 Glass Fused Outputs, 2 Amp each	\$52
PDB-4C2	4 PTC Outputs, 2 Amp each	\$52
PDB-8F2	8 Glass Fused Outputs, 2 Amp each	\$62
PDB-8C2	8 PTC Outputs, 2 Amp each	\$62
PDB-8F8R2	8 Glass Fused Outputs with Relays, Fire Trigger, 2 Amp each	\$150
PDB-8C8R2	8 PTC Outputs with Relays, Fire Trigger, 2 Amp each	\$150
PDB-8C1R2	8 PTC Outputs, Fire Trigger/Relay, 2 Amp each	\$124
PDB-8F1R2	8 Glass Fuse Outputs, Fire Trigger/Relay, 2 Amp each	\$124



AQD Series Power Supply Boards Only

ITEM	DESCRIPTION	PRICE
AQD1B	1 Amp, Dual Voltage Power Supply Board Only	\$160
AQD2B	2 Amp, Dual Voltage Power Supply Board Only	\$212
AQD4B	4 Amp, Dual Voltage Power Supply Board Only	\$253
AQD6B	6 Amp, Dual Voltage Power Supply Board Only	\$294



Common power supply configurations for reference:

ITEM	DESCRIPTION	PRICE
AQD1-1R	1 Amp, Dual Voltage Power Supply with enclosure, Fire Trigger	\$335
AQD1-4F2	2 Amp, Dual Voltage Power Supply with enclosure, 4 outputs, 2 Amp glass fuse	\$335
AQD2-1R	2 Amp, Dual Voltage Power Supply with enclosure, Fire Trigger	\$438
AQD2-4C2	2 Amp, Dual Voltage Power Supply with enclosure, 4 outputs, 2 Amp PTC polyswitch	\$387
AQD2-8F8R2	2 Amp, Dual Voltage Power Supply with enclosure, 8 outputs, 2 Amp glass fuse, 8 relays, Fire Trigger	\$485
AQD4	4 Amp, Dual Voltage Power Supply with enclosure	\$376
AQD4-8C8R2	4 Amp, Dual Voltage Power Supply with enclosure, 8 outputs, 2 Amp PTC polyswitch, 8 relays, Fire Trigger	\$526
AQD4-8F8R2	4 Amp, Dual Voltage Power Supply with enclosure, 8 outputs, 2 Amp glass fuse, 8 relays, Fire Trigger	\$526
AQD6-8C1R2	6 Amp, Dual Voltage Power Supply with enclosure, 8 outputs, 2 Amp PTC polyswitch, 1 relay, Fire Trigger	\$541
AQD6-8C8R2	6 Amp, Dual Voltage Power Supply with enclosure, 8 outputs, 2 Amp PTC polyswitch, 8 relays, Fire Trigger	\$567
AQD6-8F8R2	6 Amp, Dual Voltage Power Supply with enclosure, 8 outputs, 2 Amp glass fuse, 8 relays, Fire Trigger	\$567

How to Order Specify quantity and the following information. Order related products separately.

MODEL SERIES	OUTPUT TYPE	OUTPUT POWER	ENCLOSURE STYLE	NUMBER OF OUTPUTS	FUSE TYPE*	NUMBER OF RELAYS	FUSE SIZE
AQ	D	6	-	8	F	8	2
AQ	D Dual Voltage	1	- In Enclosure	(blank) One Output, No Distribution Board			
		2	B Circuit Board Only	4	F Glass Fuses	8R	2 2 Amp
		4		8	C PTC Polyswitch	16R	
		6		12			
				16			

* Fuse type and size must be the same for both distribution boards for standard ordering.
For custom configurations, please contact the factory at 800.626.7590.

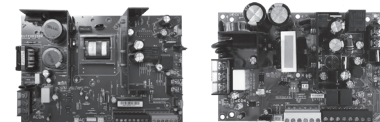
AQL Series Power Supplies with E1 Enclosures

ITEM	DESCRIPTION	PRICE
AQL4-E1	4 Amp at 12 VDC or 3 Amp at 24 VDC Power Supply with E1 Enclosure	\$438
AQL6-E1	6 Amp, Dual Voltage Power Supply with E1 Enclosure	\$479
AQL102-E1	10 Amp at 12 VDC, Single Voltage Power Supply with E1 Enclosure	\$510
AQL104-E1	10 Amp at 24 VDC, Single Voltage Power Supply with E1 Enclosure	\$552



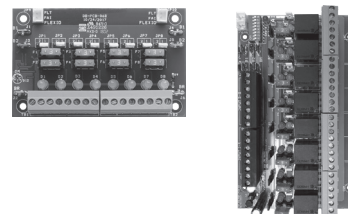
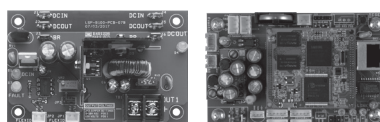
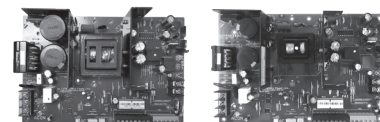
AQL Series Power Supplies Boards Only

ITEM	DESCRIPTION	PRICE
AQL4	4 Amp at 12 VDC or 3 Amp at 24 VDC, Dual Voltage Power Supply Board Only	\$315
AQL6	6 Amp, Dual Voltage Power Supply Only	\$356
AQL102	10 Amp at 12 VDC, Single Voltage Power Supply Only	\$387
AQL104	10 Amp at 24 VDC, Single Voltage Power Supply Only	\$428



AQL Series Modules

ITEM	DESCRIPTION	PRICE
B100	Secondary Voltage Module	\$103
D8	3 A ATO Fused Power Distribution Module	\$73
D8P	2.5 A Polyswitch Fused Power Distribution Module	\$73
R8	Power Relay Module	\$145
NL4	The Netlink is a four data port network communication interface for remote power monitoring, reporting and control	\$541



AQL Series Common Configurations

ITEM	DESCRIPTION	PRICE
AQL4-R8E1	4 Amp at 12 VDC or 3 Amp at 24 VDC Power Supply, Power Relay Module with E1 Enclosure	\$582
AQL4-B100R8E1	4 Amp, Dual Voltage Power Supply, Secondary Voltage Module, Power Relay Module with E1 Enclosure	\$685
AQL4-B100D8NL4E1	4 Amp, Dual Voltage Power Supply, Secondary Voltage Module, Power Distribution Module with Netlink™ Network Monitoring and E1 Enclosure	\$1154
AQL6-R8E1	6 Amp, Dual Voltage Power Supply, Power Relay Module with E1 Enclosure	\$624
AQL6-B100R8E1	6 Amp, Dual Voltage Power Supply, Secondary Voltage Module, Power Relay Module with E1 Enclosure	\$727
AQL6-B100D8NL4E1	6 Amp, Dual Voltage Power Supply, Secondary Voltage Module, Power Distribution Module with Netlink™ Network Monitoring and E1 Enclosure	\$1195

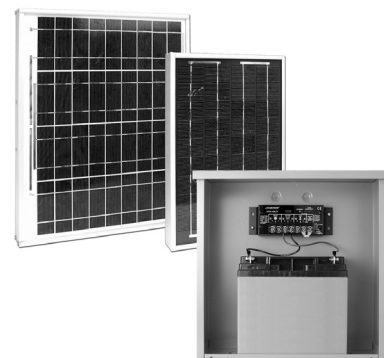
How to Order Specify quantity and the following information. Order related products separately.

POWER SUPPLY MODULE	SECONDARY VOLTAGE MODULE	DISTRIBUTION MODULE	D8 FUSE STYLE	RELAY MODULE	NETLINK MODULE	ENCLOSURE
AQL4	-B100	2D8	P	R8	NL4	E1
AQL4	(blank)	(blank)	(blank) 3 A ATM Fuse	(blank)	(blank)	(blank) Module Only
AQL6	B100	D8	P 2.5 A PTC Polyswitch	R8	NL4	E1
AQL102		2D8		2R8		
AQL104		3D8		3R8		
		4D8				
		5D8				
		6D8				

AQL4 in an E1 enclosure has six module spaces where B100, NL4 and D8/D8P each take up one module space. R8 takes up two module spaces.
 AQL6, AQL102 and AQL104 in an E1 enclosure has four module spaces where B100, NL4 and D8/D8P each take up one module space.
 R8 takes up two module spaces.

BPSS Solar Power Supplies

ITEM	DESCRIPTION	PRICE
BPSS-10	12 VDC with 10 W Solar Panel and 9 Ah Battery	\$1291
BPSS-20	12 VDC with 20 W Solar Panel and 18 Ah Battery	\$1462



BPSS Accessories

ITEM	DESCRIPTION	PRICE
B-12-9	Battery — 12 VDC, 9 Ah	\$229
B-12-18	Battery — 12 VDC, 18 Ah	\$295
PMK-3	Mounting Kit 3 in Pole for CCM Nema Enclosure	\$142
SPK	Solar Panel Kit — 20 W	\$914
SWK	High Wind Kit for 20 W Solar Panel	\$186

AQE Single-Port PoE Injector

ITEM	DESCRIPTION	PRICE
AQE30	MidSpan Injector, 2.6 Amp, Dual Voltage	\$253
AQE30E	MidSpan Extractor, 0.6 Amp	\$253



PSP Plug-In Power Supplies

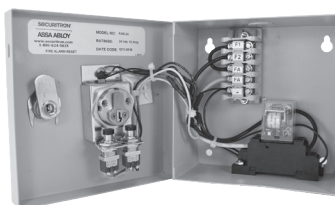
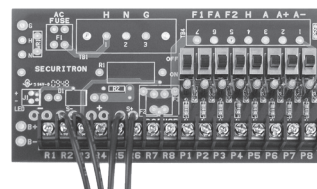
ITEM	DESCRIPTION	PRICE
PSP-12	12 VDC, 700 mA	\$79
PSP-24	24 VDC, 350 mA	\$74
PSP-12-3	12 VDC, 3 Amp	\$156
PSP-24-1.5	24 VDC, 1.5 Amp	\$156



Additional Power Products

Additional Power Products

ITEM	DESCRIPTION	PRICE
B-12-5	Battery — 12 VDC, 5 Amp	\$81
B-24-5	Battery — 24 VDC, 5 Amp	\$177
BR-4	Bridge Rectifier — 4 Amp	\$55
CFAR-12	Fire Alert Reset Control – Canada — 12 VDC, Board Only	\$101
CFAR-24	Fire Alert Reset Control – Canada — 24 VDC, Board Only	\$101
CKL	Cabinet Key Lock	\$32
FAR-12	Fire Alert Reset Control — 12 VDC	\$504
FAR-24	Fire Alert Reset Control — 24 VDC	\$504



Power Transfers

CEPT Concealed Electrical Power Transfers

MODEL	DESCRIPTION	606	612	613E	630	BSP
CEPT-10	10 Wire	\$593	\$621	\$566	\$428	\$566
CEPT-C5E	CAT-5E	\$646	\$677	\$620	\$479	\$620
CEPT-NW	No Wires	\$593	\$621	\$566	\$428	\$566
EL-CEPT	Electrolynx® Connectors	\$684	\$717	\$657	\$513	\$657

How to Order *Specify quantity and the following information. Order related products separately.*

WIRE CONNECTORS	MODEL	NUMBER OF WIRES	FINISH
EL	– CEPT	– C5E	– 613E
(blank) No Connectors	CEPT Concealed Power Transfers	(blank) 12 Wires (EL CEPT only)	(blank) 630 Satin Stainless Steel
EL Electrolynx® Connectors		10 10 Wires	04 US04/606 Satin Brass
		C5E 9 Wires	10 US10/612 Satin Bronze
		NW No Wires	613E Dark Oxidized Satin Bronze Powder
			BSP Black Suede Powder

NOTE: Not every combination is possible. Please contact factory if you need a combination of features not listed above.



SEPT Square-Cut Electrical Power Transfers

ITEM	DESCRIPTION	PRICE
EL-SEPT	Electrolynx® Connectors (Compatible with 12-22AWG wires)	\$120
SEPT	Cut Standard Version	\$91
SEPT-10	10 Wire	\$130
SEPT-C5E	CAT-5E Compatible	\$124



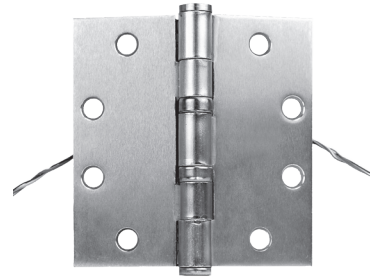
EPT Electrical Power Transfers

ITEM	DESCRIPTION	PRICE
EL-EPT	ElectroLynx® 10" Cord, Standard Swing	\$125
EL-EPT-SC	ElectroLynx® 10" Cord, Swing Clear	\$164
EL-EPTL	ElectroLynx® 18" Cord, Standard Swing	\$151
EPT	10" Cord, Standard Swing	\$81
EPT-SC	10" Cord, Swing Clear	\$122
EPTL	18" Cord, Standard Swing	\$109



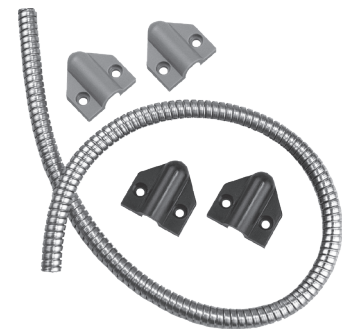
EH Electric Hinges

ITEM	DESCRIPTION	PRICE
EH-40	6 Wire [4.5" x 4.0"]	\$322
EH-45	6 Wire [4.5" x 4.5"]	\$322



TSB-C Door Cords

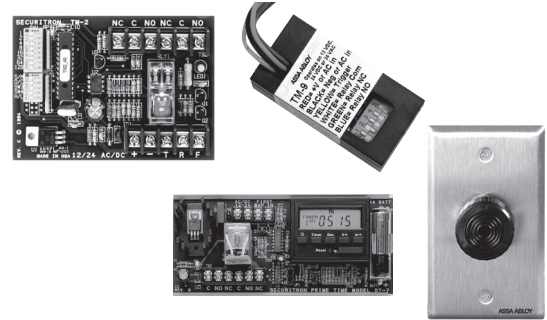
ITEM	DESCRIPTION	PRICE
TSB-C	With Caps, Gray/Black, 18"	\$44
TSB-CXL	With Caps, Gray/Black, 36"	\$53



Accessories

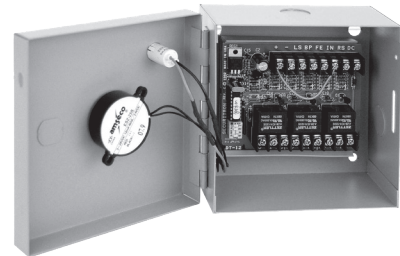
DT-7, PZ1, TM-2 and TM-9 Timers & Alarms

ITEM	DESCRIPTION	PRICE
DT-7	Digital Timer, 7 day	\$290
PZ1	Piezo on Keyplate — Single Gang	\$88
TM-2	Multi-Function Timer, 1-255 seconds	\$181
TM-9	Time Mate Timer, 2-36 Seconds	\$93



BA-DPA Drop Prop Alarm Monitoring

ITEM	DESCRIPTION	PRICE
BA-DPA-12	12 VDC with Boxed Alarm	\$317
BA-DPA-24	24 VDC With Boxed Alarm	\$317



DPS Door Position Switches

ITEM	DESCRIPTION	PRICE
DPS-M-BK	For Metal Doors, Black	\$37
DPS-M-GY	For Metal Doors, Grey	\$37
DPS-M-WH	For Metal Doors, White	\$37
DPS-W-BK	For Wood Doors, Black	\$28
DPS-W-GY	For Wood Doors, Grey	\$28
DPS-W-WH	For Wood Doors, White	\$28



MSS Magnetic High Security Door Position Switch

ITEM	DESCRIPTION	PRICE
MSS-1	Magnetic High Security Switch	\$272
MSS-1-RT	Remote Test	\$319
MSS-1C	Concealed	\$272
MSS-1C-RT	Concealed, Remote Test	\$319
MSS-1G	Surface Mount	\$272
MSS-1G-RT	Surface Mount, Remote Test	\$319



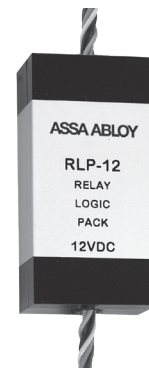
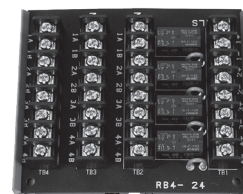
LM Latch Monitor Status Switch

ITEM	DESCRIPTION	PRICE
LML-1	ANSI, 4-7/8, Strike, SPDT, 3 Amp	\$148
LML-2	ANSI, 4-7/8, Strike, SPDT, 3 Amp, Dual Switches	\$200
LMS-1	ANSI, 2-3/4", Strike, SPDT, 3 Amp	\$148



RB-4, RLP Relay Boards & Logic Packs

ITEM	DESCRIPTION	PRICE
RB-4-12	Relay Board — 12 VDC	\$143
RB-4-24	Relay Board — 24 VDC	\$143
RLP-12	Relay Logic Pack — 12 VDC	\$77
RLP-24	Relay Logic Pack — 24 VDC	\$77



Warranties

In 1999 Securitron® introduced the first no-fault, no-questions asked warranty to the industry, MagnaCare®. We believe that the best products in the industry should be supported by our commitment to deliver the highest quality products and services. This is our expectation and commitment to you – our valued customer.



**MagnaCare
Warranty**

MagnaCare Warranty

Duration: Lifetime

Condition: Any reason, including, but not limited to, installation error, vandalism or force majeure.

Replacement: Replacement product or equivalent shipped at Securitron expense via next day air freight in most cases.

Products Covered:

- Electromagnetic and Specialty Locks
- Power Supplies (excluding BPSS) and Power Transfers
- Push Buttons, Keypads, Keyswitches and Egress Devices

.....



**SecuriCare
Warranty**

SecuriCare 5-year Warranty

Duration: Five years from date of shipment

Condition: Any reason, including but not limited to, installation error, vandalism or force majeure

Replacement: Replacement product or equivalent shipped at Securitron's expense via next day air freight in most cases.

Products Covered:

- Electric Strikes & Accessories (MUNL, UNL, FSNUL)

.....



**SecuriCare
Warranty**

SecuriCare 3-year Warranty

Duration: Three years from date of shipment

Condition: Any reason, including but not limited to, installation error, vandalism or force majeure

Replacement: Replacement product or equivalent shipped at Securitron's expense via next day air freight in most cases.

Products Covered:

- DR100 and R100 Aperio® Wireless Card Readers
- BPSS Solar Power Supplies
- GL1 Gate Lock & Accessories
- Accessories

Check your individual product to determine warranty coverage. Batteries and consumables are not covered by Securitron Warranty programs. Replacement products, at Securitron's sole option, may be the identical item or a unit which serves as a functional replacement. If the customer has an account with Securitron or a valid credit card, the customer may order an advance replacement product, whereby Securitron will charge the customer's account for the price of the product plus next day air freight, and will credit back to the customer the full amount of the charge, including outbound freight, upon Securitron's receipt of the original product from the customer. Securitron's sole and exclusive liability, and customer's sole remedy, is limited to the replacement of the Securitron product when delivered to Securitron's facility (freight and insurance charges prepaid by customer).

Securitron® Terms & Conditions

PRICES: All prices are subject to change without notice. Prices listed on the Securitron website will serve as the most current list price. All shipments will be made at prices in effect at the time of order. The customer shall be responsible for payment of all applicable sales and/or use taxes and freight costs.

MINIMUM ORDER: Minimum product charge per invoice is \$150.00 USD.

PAYMENT TERMS: Net thirty (30) days from date of invoice. Interest at the rate of up to 1-1/2% per month may be charged on all past due accounts. An order received on an account which has not been paid within 45 days of the date of invoice may not be processed until the account is current. Custom orders may require a deposit.

DELIVERY TERMS: All prices are Ex-works factory. Purchaser assumes the risk of loss or damage to the goods while in transit from the point of shipment. Securitron reserves the right to make delivery in installments. Installments shall be separately invoiced and paid for when due. Delay in delivery of an installment shall not relieve the purchaser of its obligation to accept remaining deliveries.

FREIGHT POLICY: All Purchase Orders received with a minimum net value of \$3,500 will qualify automatically for free standard freight within the continental United States. This minimum amount applies per Purchase Order to qualify and does not include free expedited freight. Qualified orders may ship partial or ship complete at your preference. Qualified orders that ship partial will not incur freight charges. All shipments that do not qualify for free freight will be charged for freight based upon our terms in effect at the time of shipment. Customers may provide their own carrier account number for expedited freight methods or for any Purchase Order to be used to cover freight costs. Minimum amounts are subject to change without notice.

SHORTAGE: Any claim for shortages must be made to Securitron in writing within one (1) week of receipt of merchandise.

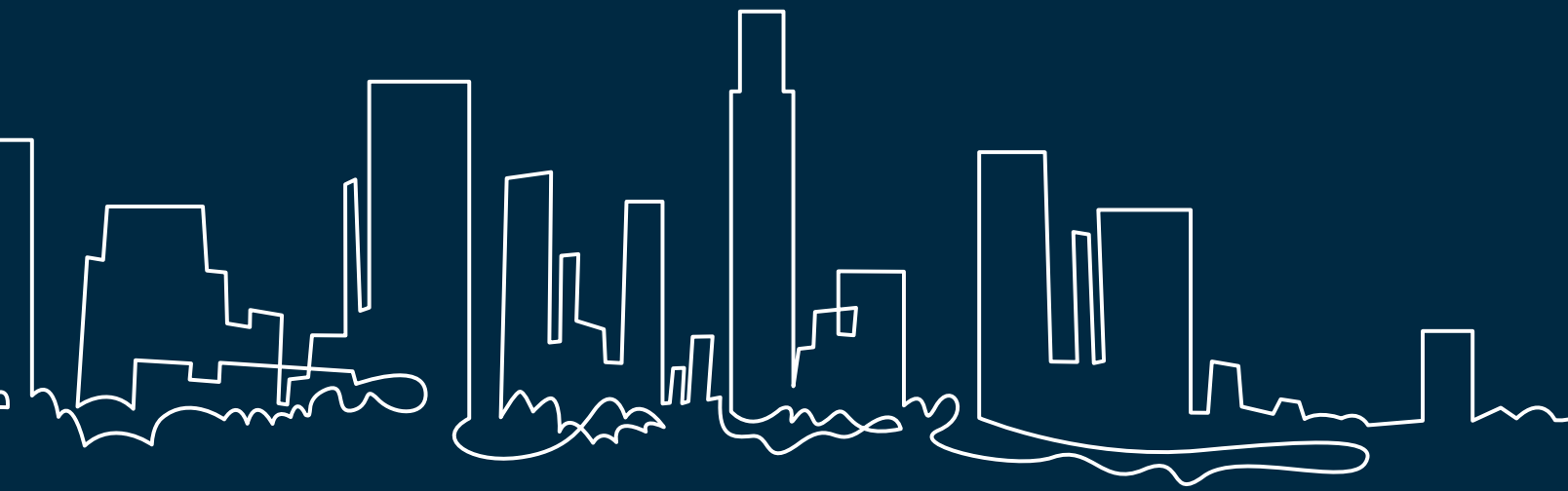
WARRANTY RETURNS: A Customer Care Form (CCF) for defective product must be obtained from Securitron before any merchandise can be returned. CCF's are valid for sixty (60) days from date of issuance. Goods returned under the terms of MagnaCare® and SecuriCare® Warranties may require a copy of the original invoice.

RETURNS: A Customer Care Form (CCF) must be obtained from Securitron before any merchandise can be returned. CCF's are valid for sixty (60) days from date of issuance. Items that are not factory sealed, or that are returned later than 90 days from the date of receipt are subject to a restocking charge plus an additional charge for any damage.

CANCELLATIONS: Any order may be subject to a 5% cancellation charge for catalog items. Cancellation of non-catalog or custom items will be subject to a 20% cancellation charge plus all costs (both direct and indirect) incurred by manufacturing at the point of cancellation that are properly allocated to the cancelled item(s).

LIMITATION OF LIABILITY: Neither party will be liable to the other for any delay or failure in performance arising directly out of war, sabotage, insurrection, riot, and any other act of civil disobedience, act of public enemy, fire, explosion, flood, storm, or other act of God or nature, or similar cause beyond its reasonable control, including shortage or unavailability of labor or materials. If, notwithstanding the foregoing limitations, Securitron has any liability to the purchaser, the purchaser agrees that the total liability to the purchaser for all losses, damages, and causes of action, whether in contract, equity, tort (including without limitation, negligence and gross negligence), or otherwise, will not exceed the amount the purchaser paid to Securitron for the products (including, without limitation, incidental or consequential damages, damages for lost profits or business interruption, and punitive damages).

NO THIRD PARTY LIABILITY If the purchaser uses the Securitron Products on behalf of others or provides to others any products referenced herein, the Securitron Parties shall have no liability to such persons whatsoever, and the purchaser agree to defend and indemnify the Securitron Parties from any and all claims and demands asserted against them, and from any legal fees, costs and other expenses that the Securitron Parties incur therewith.



securitron.com

SECURITRON

ASSA ABLOY

The ASSA ABLOY Group is the global leader in access solutions. Every day we help people feel safe, secure and experience a more open world.



USA

800 626 7590 | f. 866 582 4641 | securitron.com
customerservice.securitron@assaabloy.com
techsupport.securitron@assaabloy.com
orders.securitron@assaabloy.com

CANADA

800 461 3007 | f. 800 461 8989 | assaabloydss.ca
sales.dss.ca@assaabloy.com
orders.dss.ca@assaabloy.com

Printed in the U.S.

Patent pending and/or patent www.assaabloydss.com/patents

Copyright © 2024, Hanchett Entry Systems, Inc., an ASSA ABLOY Group company.
All rights reserved. Reproduction in whole or in part without the express written permission of Hanchett Entry Systems, Inc. is prohibited. SEC-113-0524

securitron.com