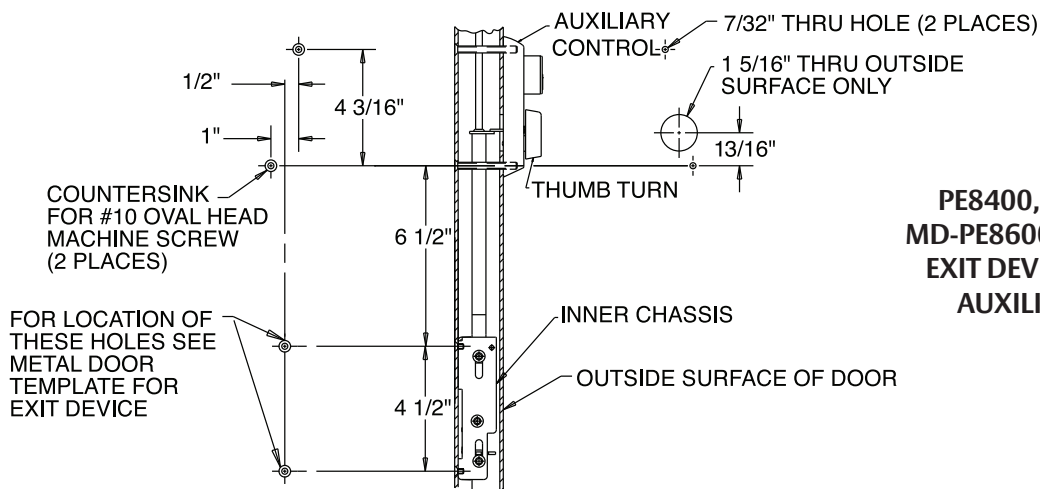
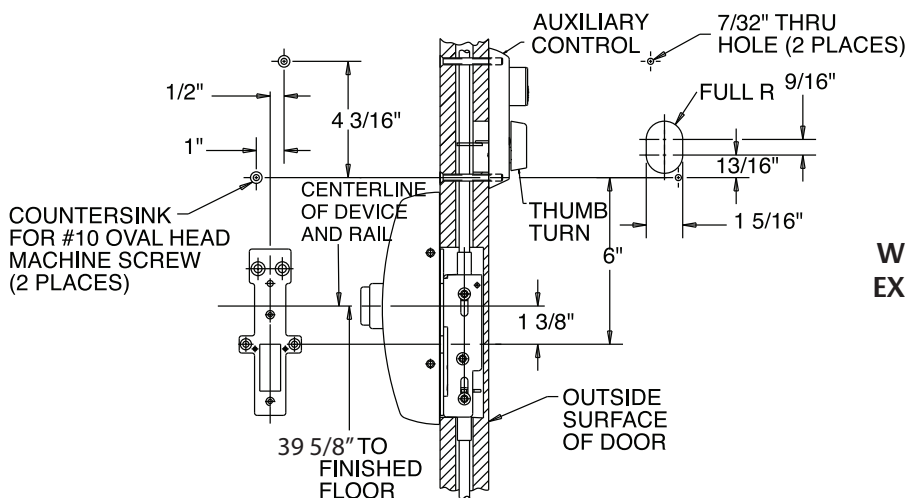


## P106, P113, WD-P106 & WD-P113

### Auxiliary control with Concealed Vertical Rod Exit Devices



PE8400, 12-MD-PE8400,  
MD-PE8600 & 12-MD-PE8600  
EXIT DEVICE X P100 SERIES  
AUXILIARY CONTROL



WD-PE8600 & 12-WD-PE8600  
EXIT DEVICE X WD-P100 SERIES  
AUXILIARY CONTROL

#### ⚠ WARNING

This product can expose you to lead which is known to the state of California to cause cancer and birth defects or other reproductive harm. For more information go to [www.P65warnings.ca.gov](http://www.P65warnings.ca.gov).

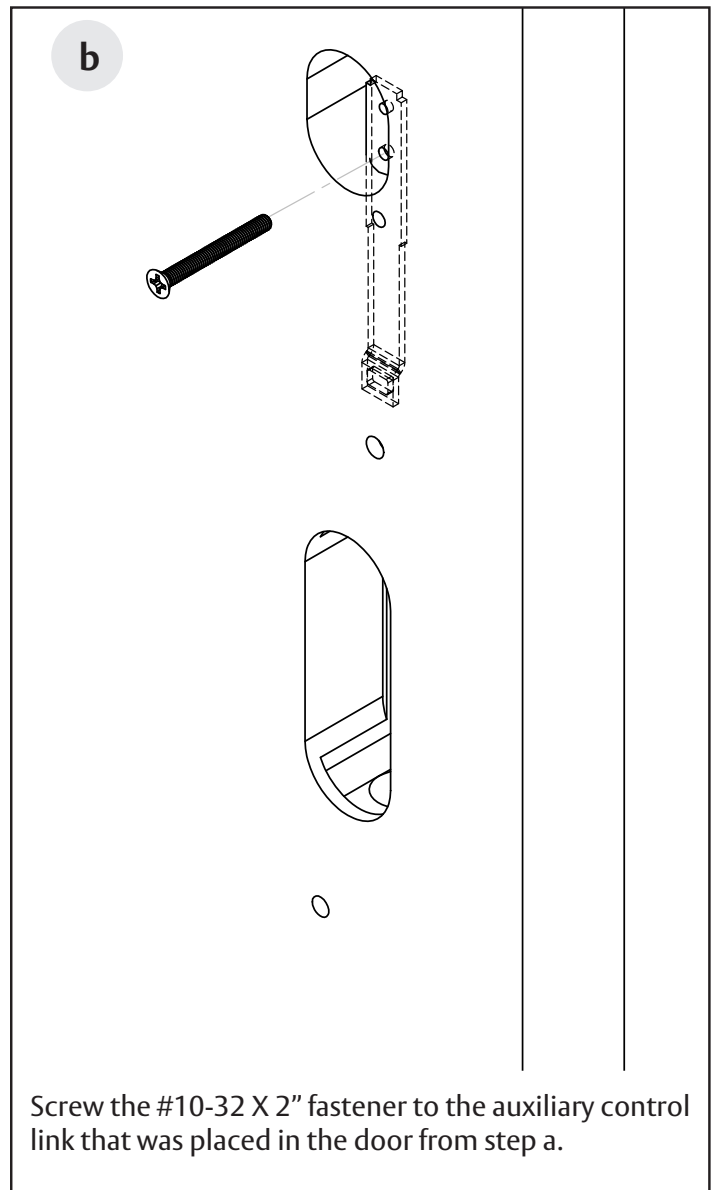
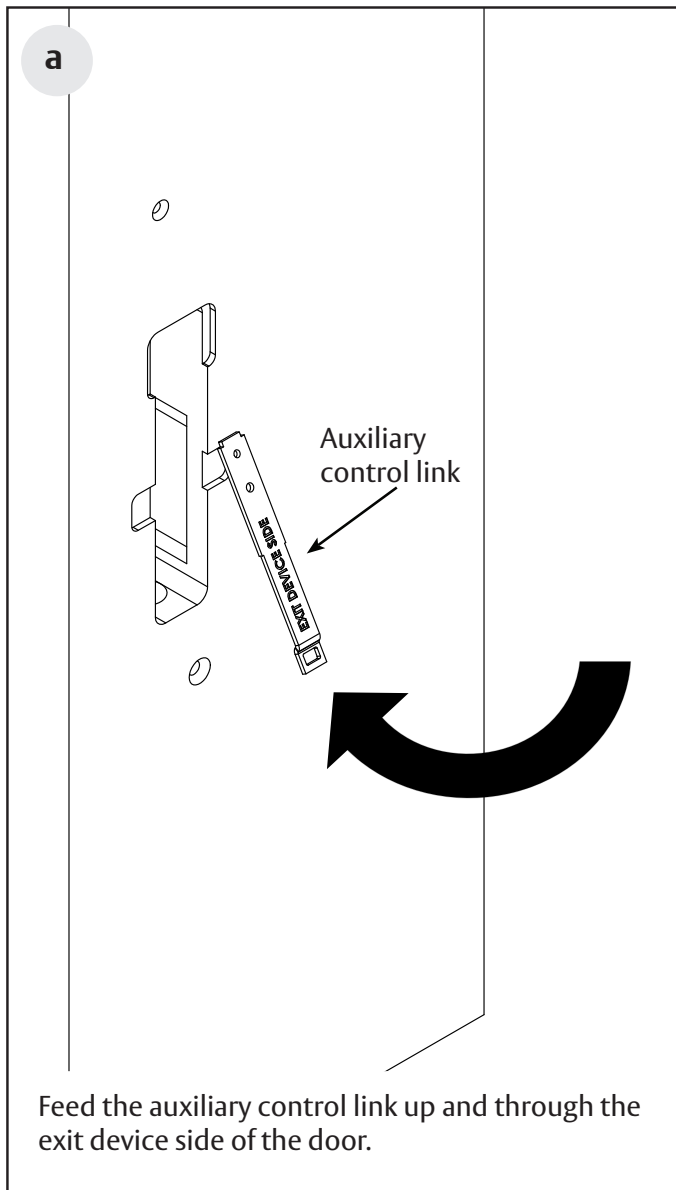
#### ⚠ WARNING

Attention Installer: Improper installation may result in damage to the product and void the factory warranty.

Auxiliary Control with Concealed Vertical Rod Exit Devices

Installation Instructions

- 1** Using the exit device instructions, prepare the door for the exit device.
- 2** Prepare the door for auxiliary control as illustrated on page 1.
- 3** For wood doors, follow steps to install the auxiliary control bracket.



# P106, P113, WD-P106 & WD-P113

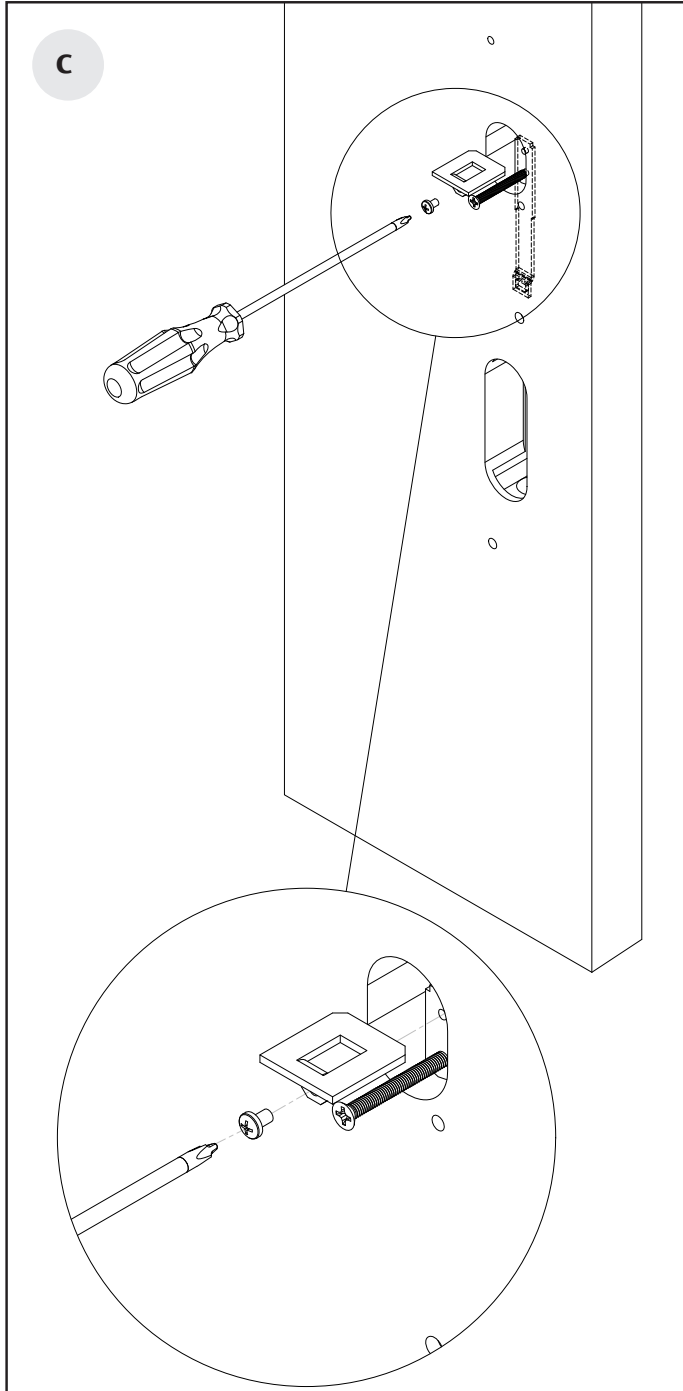
## Auxiliary Control with Concealed Vertical Rod Exit Devices

**SARGENT**

**ASSA ABLOY**

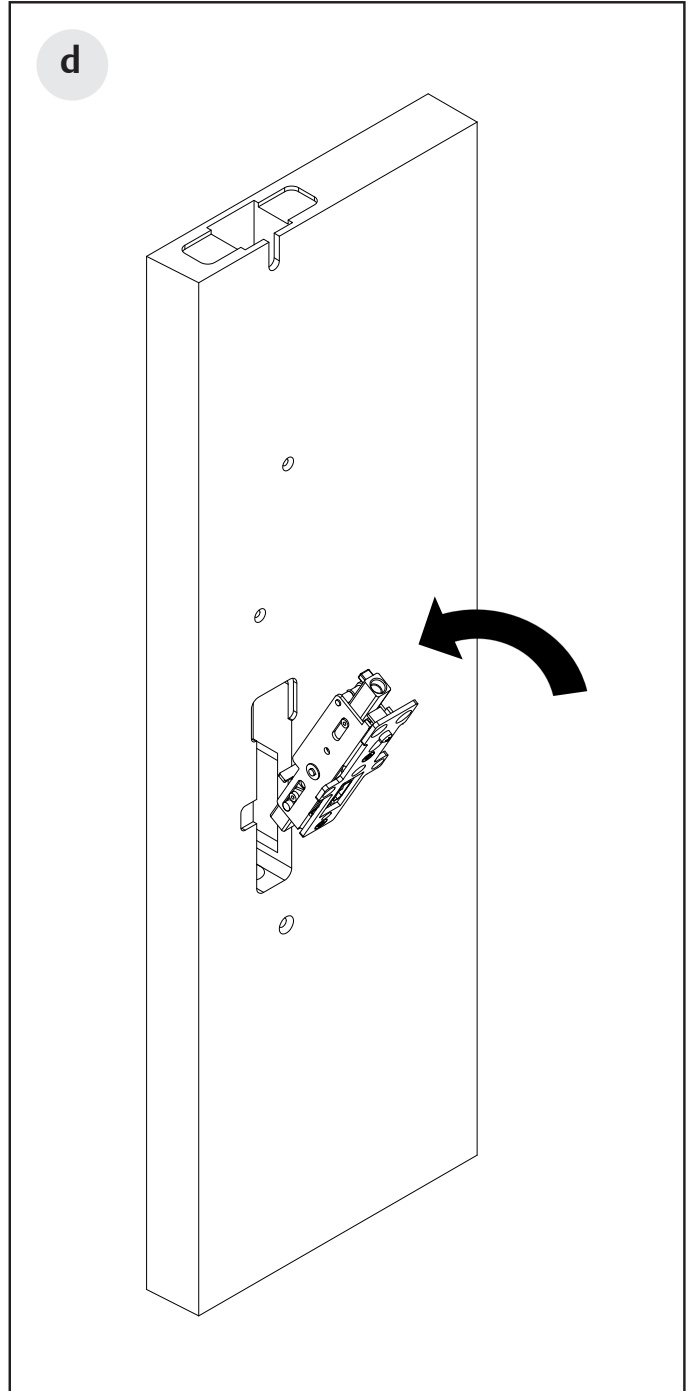
### Installation Instructions

**c**



Holding the #10-32 fastener, take the platform and the smaller screw and attach it to the upper hole on the link in the door. Remove the #10-32 X 2" fastener.

**d**

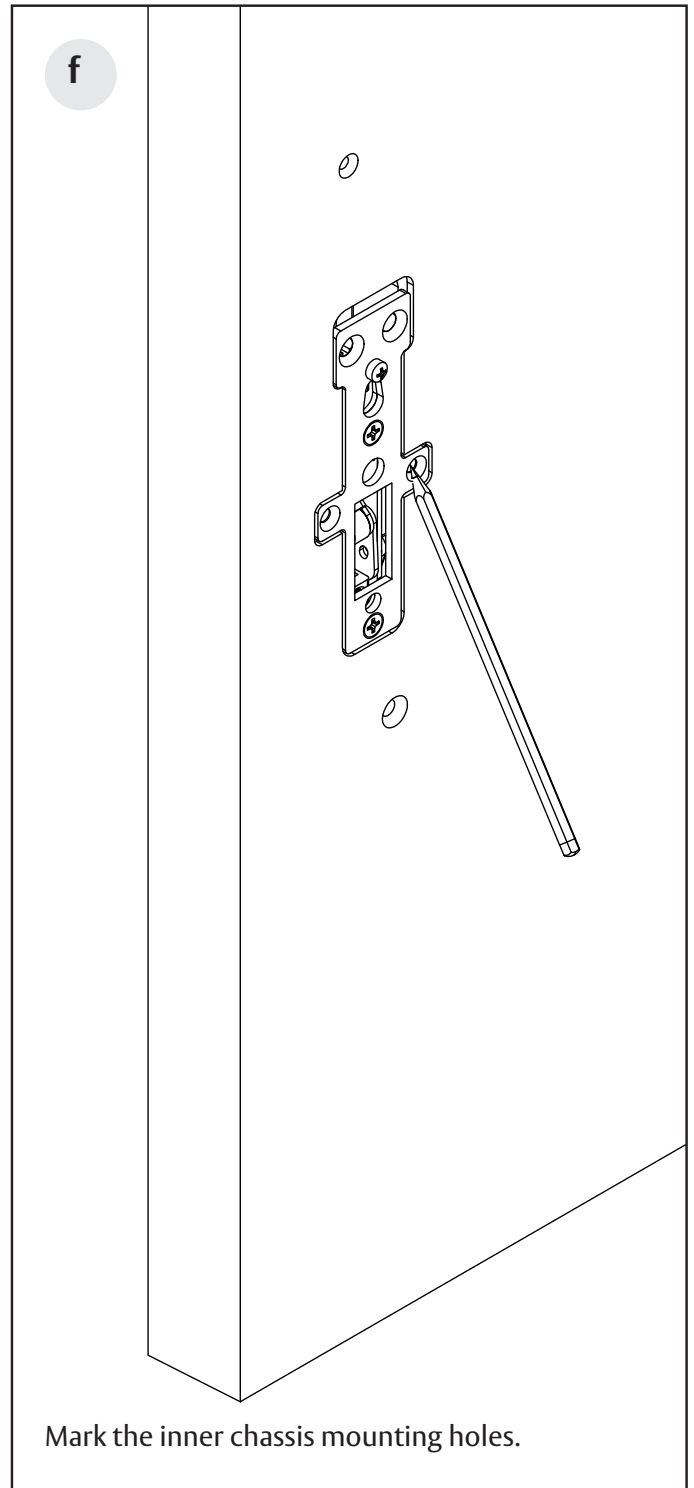
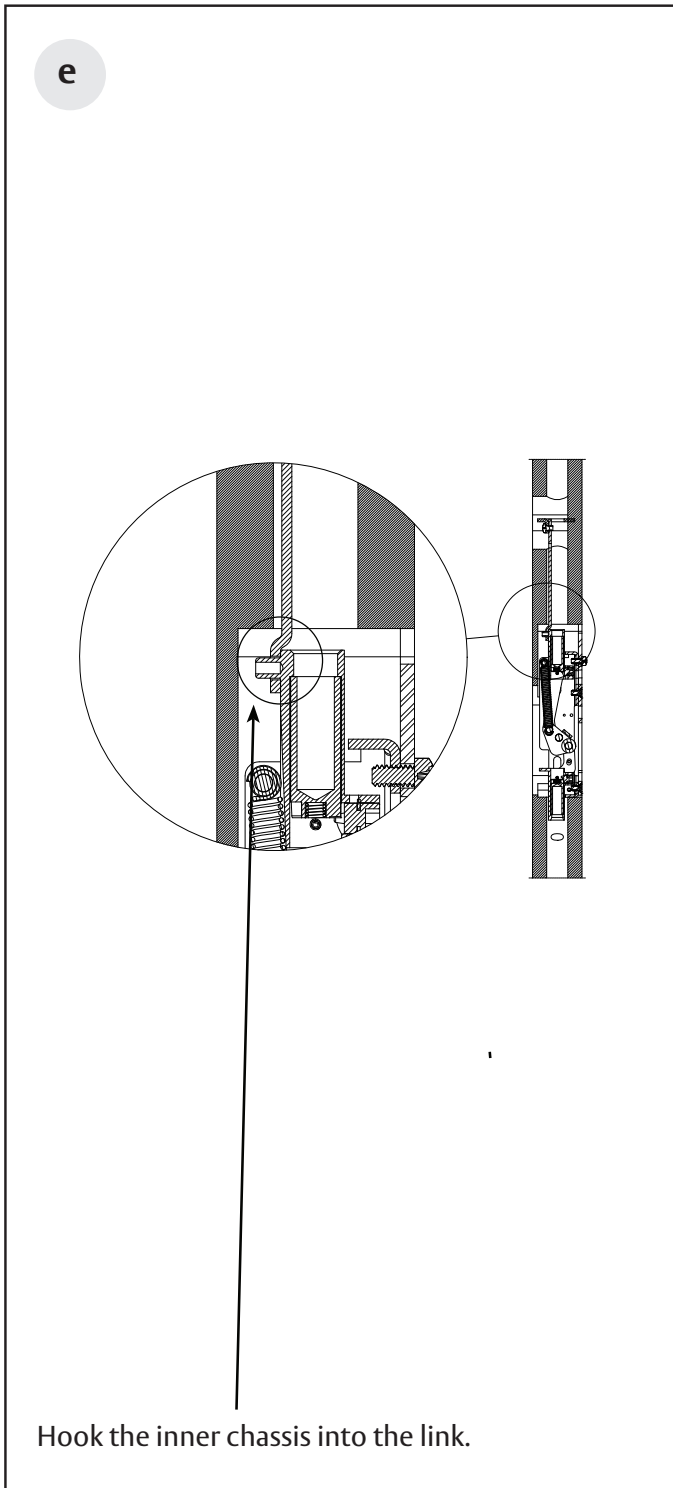


Take the inner chassis and place it into the opening.

# P106, P113, WD-P106 & WD-P113

## Auxiliary Control with Concealed Vertical Rod Exit Devices

### Installation Instructions



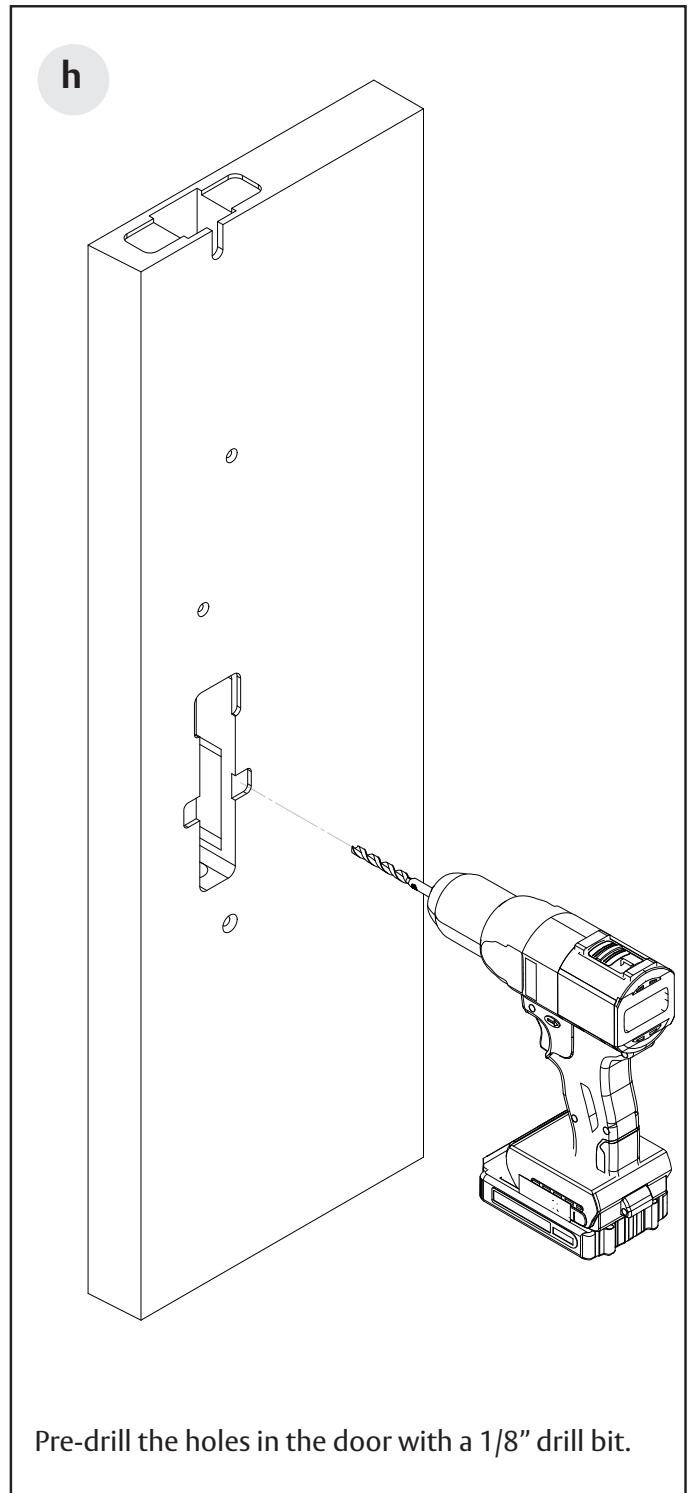
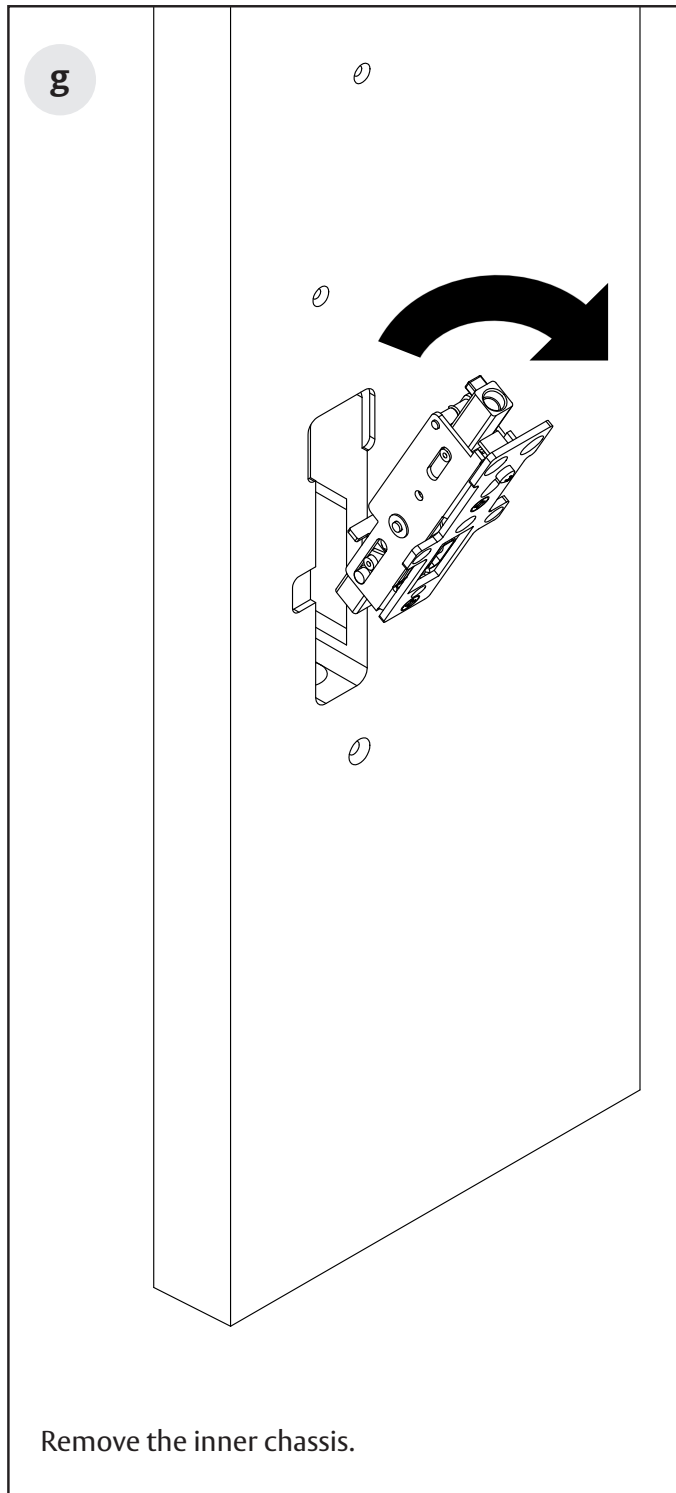
# P106, P113, WD-P106 & WD-P113

## Auxiliary Control with Concealed Vertical Rod Exit Devices

### Installation Instructions

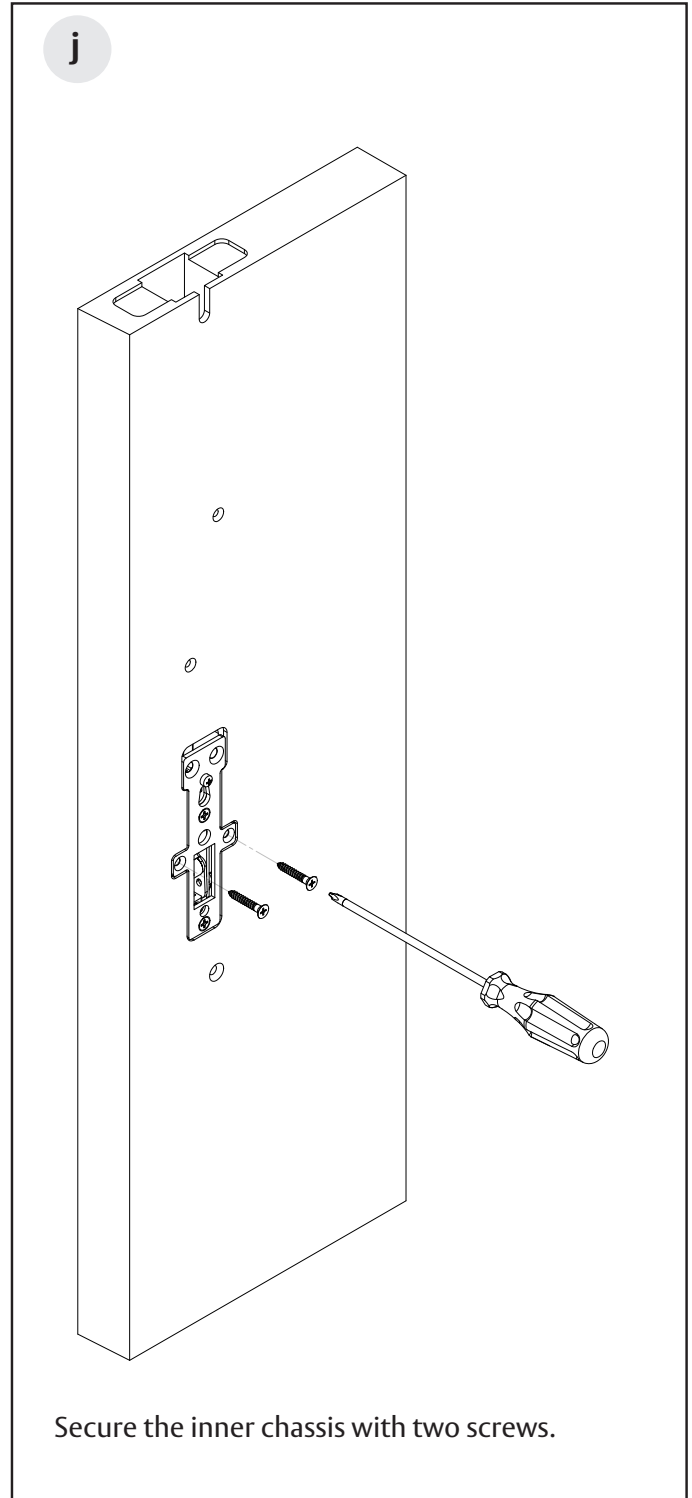
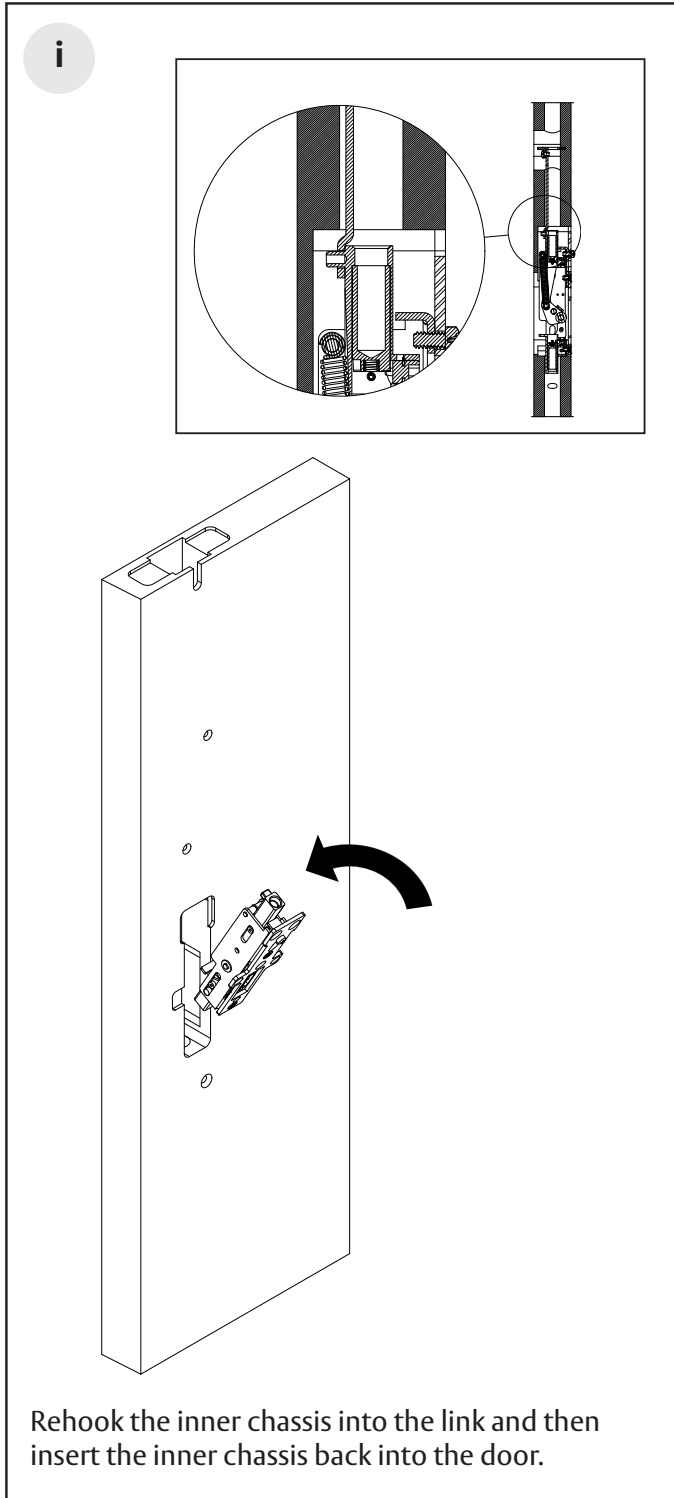
**SARGENT**

**ASSA ABLOY**



Auxiliary Control with Concealed Vertical Rod Exit Devices

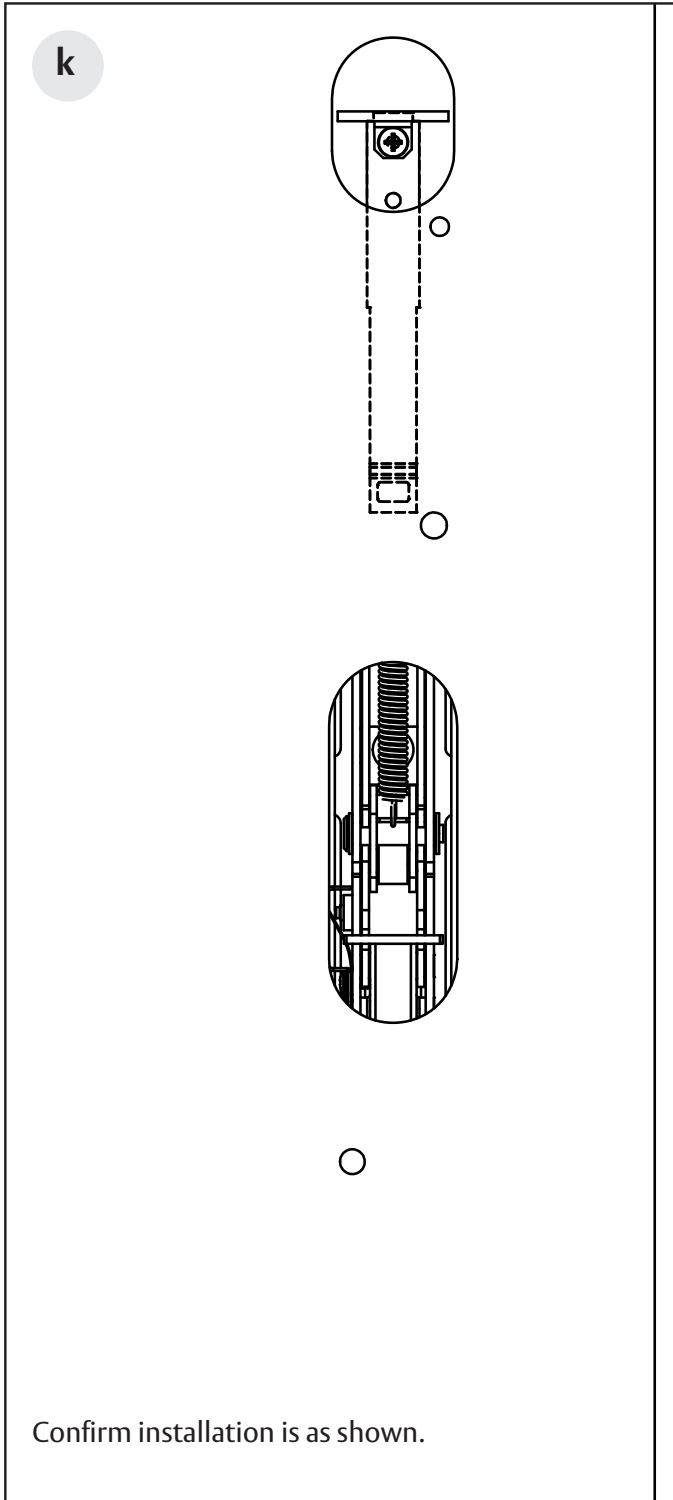
Installation Instructions



# P106, P113, WD-P106 & WD-P113

## Auxiliary Control with Concealed Vertical Rod Exit Devices

### Installation Instructions



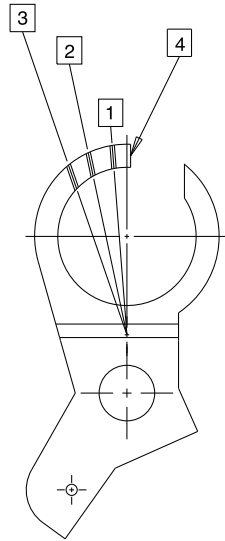
4

Using exit device instructions, mount exit device to the door.

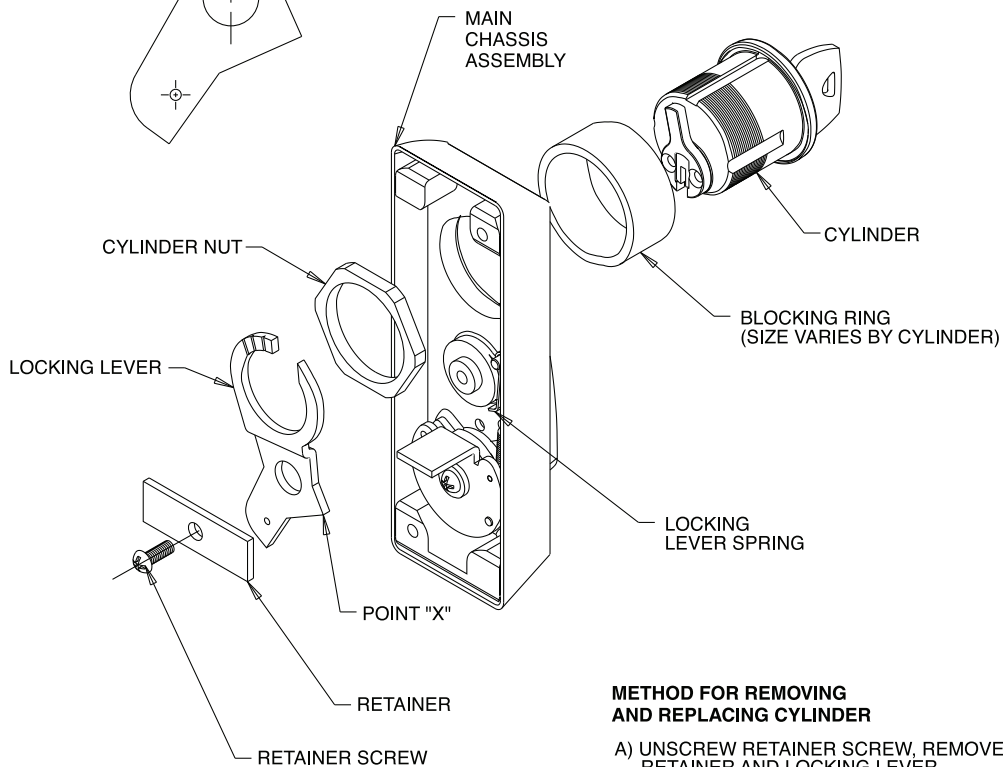
5

Mount auxiliary control to door.

**BREAK OFF POINTS (IF NEEDED)**



1. USED FOR SARGENT P-106 AND WD-P106 FUNCTION.
2. USED ON 51-P106 FUNCTION, 82-P106 AND 83-P106 PREFIX (OLD STYLE REMOVEABLE CORE).
3. USED ON SARGENT P-113 AND WD-113 FUNCTION, ALL CYLINDERS.
4. USE AS IS FOR 70-P106, 70-WD-P106, 72-P106, 72-WD-P106, 73-P106, AND 73-WD-P106 BEST CYLINDER FUNCTIONS. SCHLAGE CYLINDER SIZE #41.



**METHOD FOR REMOVING AND REPLACING CYLINDER**

- A) UNSCREW RETAINER SCREW. REMOVE RETAINER AND LOCKING LEVER.
- B) UNSCREW CYLINDER NUT, REMOVE BLOCKING RING AND CYLINDER.
- C) REPLACE CYLINDER BY REVERSING PROCEDURES ABOVE. MAKE SURE THAT CYLINDER CAM FACES UP AND THAT LOCKING LEVER SPRING ENGAGES LOCKING LEVER AT POINT "X".