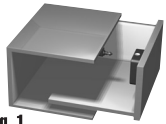


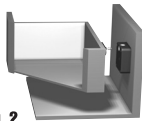


Determine desired application – see figures 1 – 4

## DRAWER APPLICATION



**Fig. 1**  
Front Face Mount  
Installs using  
Standard Locking  
Pin.



**Fig. 2**  
Back of Drawer  
Installs using Locking  
Pin with Alarm  
function. Requires  
external reader

## SLIDING & SWING DOOR APPLICATION



**Fig. 3**  
Sliding Glass  
Installs using  
Locking Pin with  
Alarm function and  
Glass Mounting Kit



**Fig. 4**  
Pivoting Door Mount  
Installs using  
Standard Locking Pin

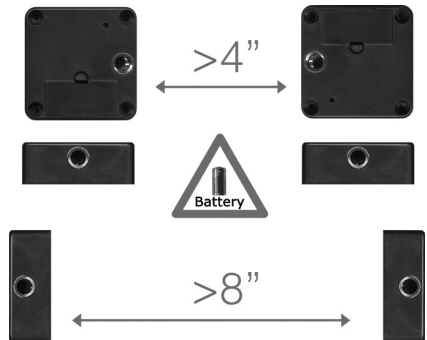
**NOTE:** Program lock before installation so you can verify read range through door

## PROGRAMMING INSTRUCTIONS

### Initializing the 3590 lock(s) to the Programming Card

1. Press the push-button on the back of the 3590.
2. The lock will make a ticking sound (signal). Place the programming card in contact with the lock within 3 seconds of hearing this signal.
3. Two short rising tone signals confirm that the programming card has been initialized.
4. If you are setting up multiple 3590 locks and would like to utilize one programming card repeat the above steps for all other 3590 locks with the same programming card.

**Note:** Multiple locks must be separated by these minimum distances for optimum operation and battery life.  
Note orientation.



## Add a User Card or Keyfob

1. Place the programming card in contact with the lock.
2. The lock will make a ticking sound (signal). Place the user card or keyfob in contact with the lock within 3 seconds of hearing this signal.
3. Two short rising tone signals confirm that the reading in was successful.
4. The lock can now be opened with card or fob.
5. For additional user cards or keyfobs repeat the above steps for each one.

## Delete a User Card or Keyfob

1. Place the programming card in contact with the lock.
2. The lock will make a ticking sound (signal). Place the user card or keyfob in contact with the lock within 3 seconds of hearing this signal.
3. Two short rising tone signals confirm that the enrollment cancellation was successful.
4. Repeat the above steps for all other user cards or keyfobs that you wish to delete from the lock.

**Note:** If lost or stolen fobs need to be deleted, you must remove all user cards or keyfobs from the lock. Then re-program valid user cards or keyfobs.

## To delete all keys at once

1. Place the programming card for more than 10 seconds in contact with the lock.
2. You will hear multiple beeps during this time.
3. When all users have been erased you will hear one long beep followed by a ticking sound ready to be programmed again.
4. Repeat steps from above for programming in user cards and keyfobs.

## Installation Instructions

### Installing the Lock Body

Carefully drill the first mounting hole with a 7/64" (2.77mm) drill bit (see diagram below). The front face of the lock case must be parallel to the door/drawer so that the pin can be fully inserted. Drill the other three mounting holes using the lock case as a guide. Do not over tighten screws.

### Installing the Pin

**Note:** Program Lock before installing the pin.

### IMPORTANT

The pin must have some free play after insertion into the lock or the mechanism may not completely cycle open or close. There should be  $\pm 1/8"$  (3mm) of free play on the door/drawer.

### For ALARM PIN:

1. Apply 2 glue buttons (provided) to the back of the pin. Insert pin into the lock case.
2. Close the drawer/door and press firmly. Present prox card or key fob to reader and open the drawer/door. If pin does not release, check lock position and that user card or keyfob has been programmed.
3. Secure pin with screws

**For Standard and Spring Loaded Pin, Please use diagram measurements to secure.**

Demonstrates Fig.1 and Fig.4 Applications

