

# Record USA Low Energy Products Price List

List Pricing effective November 1, 2023 (Rev 1)



## Table of Contents

<b>Company Contacts</b>	4
<b>Manufacturers Rep Agencies</b>	5
<b>Terms and Conditions &amp; Quick Ship Program</b>	6
<b>Handling Terminology</b>	7
<b>HA7</b>	8
<b>HA8-LP</b>	9
<b>HA8-SP</b>	11
<b>HA9</b>	13
<b>SS8200 (SimpleSwing)</b>	15
<b>EZ36</b>	17
<b>Exploded Views</b>	
HA7	18
HA8-LP	19
HA8-SP	20
HA9	22
SS8200	24
<b>Spare Parts Pricing</b>	
Controls	25
Operators/Motor Gearboxes	25
Arms	26
Miscellaneous Parts	27
Decals	29

This price list supersedes and cancels all previous price lists. Prices shown are subject to change without notice. Login to the distributor area for most current revision.

## Record USA Inc.

4324 Phil Hargett Rd.  
Monroe, NC 28110  
Main Line (HA Products): 704 290 0980 - 866 901 4284  
Main Line (SS Products): 704 289 9212  
www.recorddoors.com

## Inside Sales Team

Mark Dugo  
Vice President of Sales  
704 292 5373  
mark.dugo@recorddoors.com

Blue Houser  
Vice President of Business Operations  
803 804 3768  
blue.houser@recorddoors.com

Jennifer Griffin  
Sales Operations Manager  
704 290 0201  
jennifer.griffin@recorddoors.com

Missy Laney  
Senior Account Manager  
Phone: 704 290 0980  
missy.laney@recorddoors.com

Misty Kohnle  
Customer Service Manager  
704 290 0223  
misty.kohnle@recorddoors.com

## Product Support

HA Product Line  
Dan Wise  
Phone: 833 921 1337  
dan.wise@recorddoors.com

SS8200 Line  
Frank Keeling  
Phone: 515 707 8671  
frank.keeling@recorddoors.com

## Outside Sales Team

John Harraman  
Sales Development Representative  
Mobile: 980 425 2860  
john.harraman@recorddoors.com

Mark Huntsman  
Director of Technical Sales  
Mobile: 704 681 1411  
mark.huntsman@recorddoors.com

Liam Lehn  
Business Development Manager  
Mobile: 330 360 2601  
liam.lehn@recorddoors.com

Tony Licciardello  
OEM Sales Manager  
Mobile: 704 609 3674  
tony.licciardello@recorddoors.com

David Pickers  
Vice President of Direct Sales  
Mobile: 704 315 7392  
david.pickers@recorddoors.com

Timothy Usnik  
Strategic Sales Distribution Manager  
Mobile: 404 290 8522  
timothy.usnik@recorddoors.com

## Holiday Schedule

Record USA will be CLOSED on the following dates:

### 2023

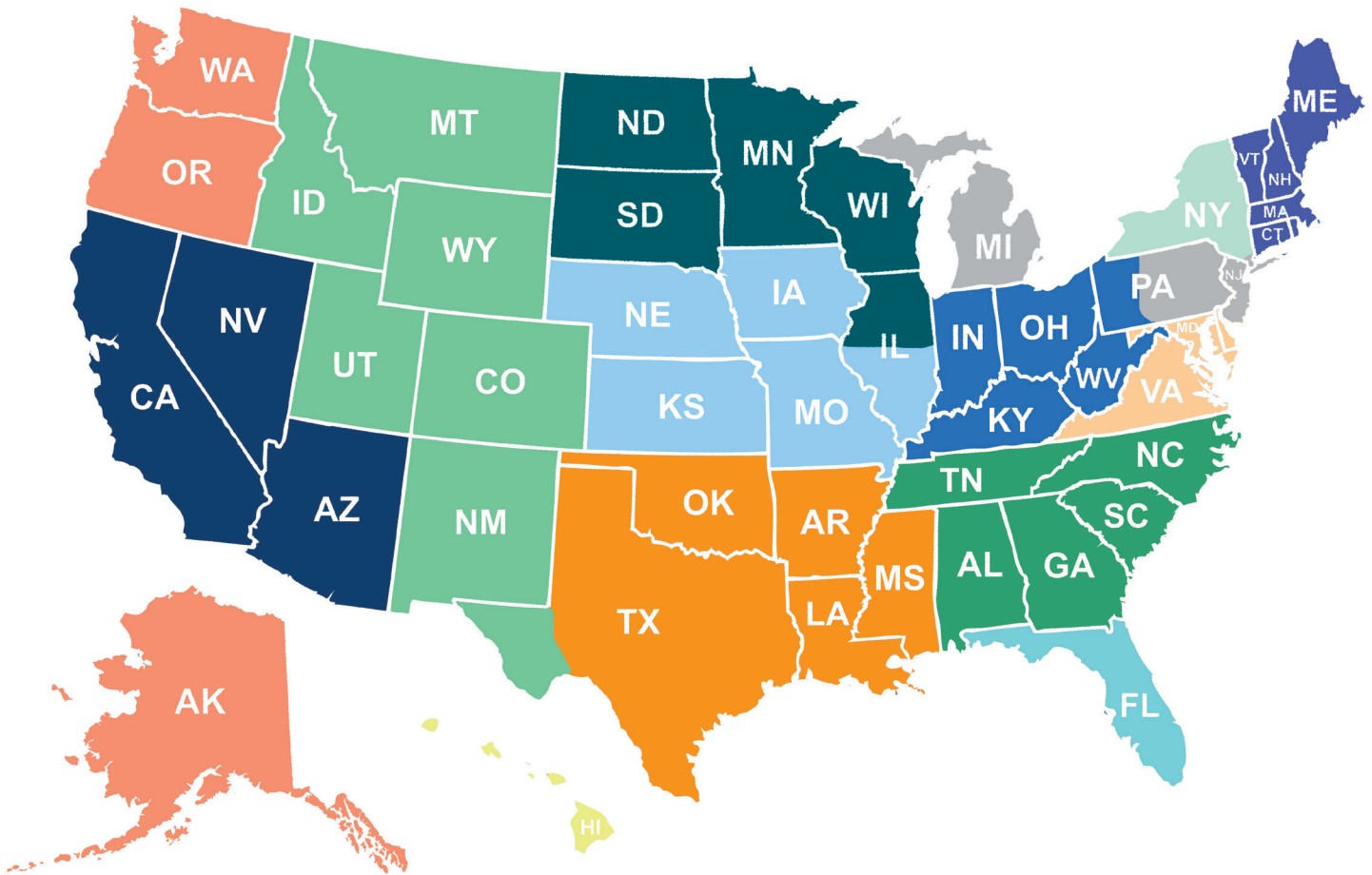
Thanksgiving Day – November 23  
Day After Thanksgiving – November 24  
Christmas Eve (observed) - December 22  
Christmas - December 25

### 2024

New Year's Day - January 1  
Presidents' Day - February 19  
Memorial Day - May 27  
Juneteenth - June 19  
Independence Day – July 4  
Labor Day – September 2  
Thanksgiving Day – November 28  
Day After Thanksgiving – November 29  
Christmas Eve (observed) - December 24  
Christmas - December 25

\* dates subject to change

## Manufacturers Rep Agencies



**Liam Lehn** (MI, Eastern PA, NJ, NY Metro)  
330 360 2601, [liam.lehn@recorddoors.com](mailto:liam.lehn@recorddoors.com)

**AWA** (IN, KY, OH, WV, Western PA)  
Austin Wendt 248 961 6163, [austin@awareps.com](mailto:austin@awareps.com)

**ASA** (IA, So IL, NE, KS, MO)  
John DeFrates 847 691 6937 [jdfirates@charter.net](mailto:jdfirates@charter.net)

**MAS** (CT, MA, VT, NH, ME, RI)  
Mark Szczepanski 860 604 1769 [mark@massalesllc.com](mailto:mark@massalesllc.com)

**AMA** (FL)  
Jack Sheehan 407 353 1223 [jack@division8consulting.com](mailto:jack@division8consulting.com)

**ASH** (So CA, So NV, AZ)  
Mark Ferraro 714 920 6440, [mark.ferraro@ash.team](mailto:mark.ferraro@ash.team)  
**Security Solutions** (No CA, No NV)  
Cherise Gallegos 916 996 4434, [cherise.gallegos@gmail.com](mailto:cherise.gallegos@gmail.com)  
**Sequoia Sales** (CA, NV, AZ)  
Fred Chubbuck 559 799 2130, [fred.chubbuck@gmail.com](mailto:fred.chubbuck@gmail.com)

**Dugan Associates** (NY, excluding NYC)  
Kyle Leach 518 281 4018, [kyle@duganassoc.com](mailto:kyle@duganassoc.com)

**WJ Schelp** (ND, SD, MN, WI, No IL)  
Scott Schelp 612 859 4890 [scott@wjschelp.com](mailto:scott@wjschelp.com)

**SSG** (TX, AR, LA, OK, MS)  
Greg Schuck 972 880 1677, [gregschuck@sbg-texas.com](mailto:gregschuck@sbg-texas.com)

**Region West** (WA, OR, AK)  
Rich Ward 702 232 1022

**Steel-Bréz** (CO, UT, MT, WY, ID, NM, El Paso Area)  
800 321 7233, [darlene@steele-brez.com](mailto:darlene@steele-brez.com)

**Tillman Sales** (NC, SC, GA, TN, AL)  
Grant Tillman 470 922 5022, [grant@tillmansalesgroup.com](mailto:grant@tillmansalesgroup.com)

**Core Products** (HI)  
Brad 808 866 2117

**John Harraman** (MD, DC, VA, DE)  
980 425 2860, [john.harraman@recorddoors.com](mailto:john.harraman@recorddoors.com)

## Terms and Conditions

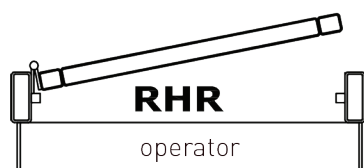
- » Cancelled orders are subject to fees.
- » Minimum \$50 order (all orders received less than \$50 will be invoiced at \$50)
- » To confirm your discount and/or net pricing please contact your customer service representative.
- » To discuss volume requirements to achieve the next level of pricing, please contact Record sales management.



- » Items listed in bold qualify for *Quick Ship*.
- » \$15 drop ship fee.
- » Orders placed by 11:00am EST will ship same day; orders placed after 11 will ship next day.
- » FREE ground freight.
- » 25% is added to list price for *Quick Ship* items.
- » We reserve the right to limit quantities.
- » No changes or cancellations will be accepted.
- » Quoted projects do not qualify for *Quick Ship* program.

## Swing Door Operator Handing Terminology Chart

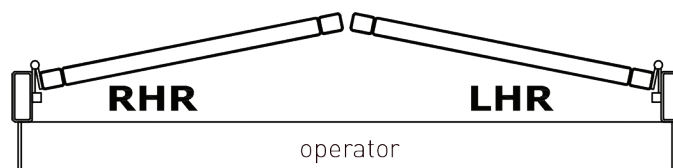
Note: Operator Handing Terminology is universal for all types of door pivot rotation. Door can be Butt Hung as shown; Continuous Hinge; Offset Pivot or Overhead Concealed Center Pivot.



LEFT HAND PUSH ARM  
(OUTSWING)



RIGHT HAND PUSH ARM  
(OUTSWING)



DUAL (PAIR) PUSH ARM  
(OUTSWING)



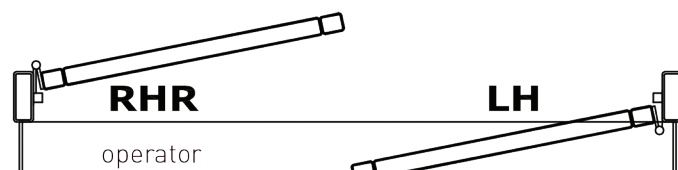
RIGHT HAND PULL TRACK  
(INSWING)



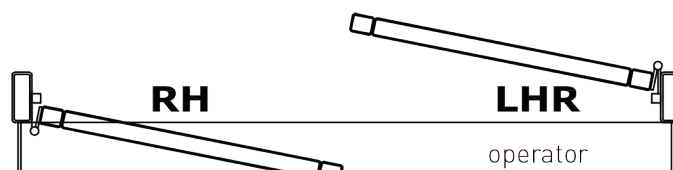
LEFT HAND PULL TRACK  
(INSWING)



DUAL (PAIR) PULL TRACK  
(INSWING)



LEFT HAND  
DUAL (DOUBLE) EGRESS



RIGHT HAND  
DUAL (DOUBLE) EGRESS

## Header Sizing Guidelines

Header Size	Door Opening Width (DOW)
39"	36" Single
45"	42" Single
51"	48" Single
75"	72" Pair
87"	84" Pair
99"	96" Pair

## HA7 Series Door Operators



### Base package prices below include:

- » Non-handed operator with controller
- » Push and Pull Arms
- » One piece, clear or dark bronze cover
- » Mounting hardware
- » Power adaptor
- » Power adaptor holder
- » Extension cable
- » Required decals to meet ANSI specifications

Part #	Application	Finish	List Price
HA7-100	Single, 39" header, push & pull combo	Clear	\$3,486.00
HA7-200	Single, 39" header, push & pull combo	Dark Bronze	\$3,486.00
<b>Accessories</b>			
W7-330000831BK	Push arm shaft extension 20mm/35mm kit	Black	\$65.00
W7-330000832BK	Pull arm shaft extension 28mm/43mm kit	Black	\$65.00
W7-1021003	Power box with adapter; supports wall mounted/flush mounted options box: 12" x 8" x 4" box cover: 13.5" x 9.5"	n/a	\$534.00

### Notes:

- » Standard orders will ship in 3-5 business days.
- » Warranty: 0-18 months from the date of door operator purchase: Repair or replace parts. Excludes wear parts.

**Power Buy Program:** We're excited to continue offering our improved quantity break program. Buying at the quantities below awards you the additional discount off of your net price. **This program is not applicable with certain buying programs. Contact your sales rep for eligibility.**

- » 10-19 operators 3.5%
- » 20-29 operators 8.0%
- » 30-49 operators 16.4%
- » 50+ operators 20.8%

**Free Freight Program:** Introducing a second incentive program for you. When you order \$15,000 in HA Series product, we'll cover the freight! This program is product specific and cannot be combined with the SS8200 to reach the minimum threshold needed to receive.



## HA8-LP Series Door Operators



### Base package prices below include:

- » Non-handed operator with controller
- » Arm
- » One piece, clear or dark bronze cover
- » Mounting hardware
- » Required decals to meet ANSI specifications

Unit	Application	Finish	List Price
<b>HA8-LP (single, 39", 45" or 51")</b>	<b>Push or Pull</b>	<b>Clear or Bronze</b>	<b>\$3,892.00</b>
<b>HA8-LP (single, 39", 45" or 51")</b>	<b>Universal Arm with extended pull track</b>	<b>Clear or Bronze</b>	<b>\$4,100.00</b>
HA8-LP ( <b>dual 75"</b> , 87", 99")	Push or Pull, Fits pair of 36", 42" or 48" doors	Clear or Bronze	\$7,777.00
HA8-LP (dual 75", 87", 99")	Universal Arm, Fits pair of 36", 42" or 48" doors	Clear or Bronze	\$8,149.00
	<b>Factory Installed Upgrades</b>		
	Dual Egress Feature	Add	\$425.00
	Extended Spindle 1/2" (WL-PO108)	Add	\$256.00
	Tuxedo Black finish for single units (39", 45" or 51")	Add	\$686.00
	Tuxedo Black finish for dual units (75")	Add	\$1,410.00

### Notes:

- » *Warranty: 0-24 months from the date of door operator purchase, repair or replace parts. Excludes wear parts. 25-36 months from the date of door operator purchase, parts replaced at 50% of cost, excluding wear parts.*
- » *Upgrade prices reflect a single motor/gearbox (except Dual Egress). Estimate cost accordingly.*
- » *Items in bold qualify for Quick Ship.*
- » *Standard orders will ship in 3-5 business days.*

**Power Buy Program:** We're excited to continue offering our improved quantity break program. Buying at the quantities below awards you the additional discount off of your net price. **This program is not applicable with certain buying programs. Contact your sales rep for eligibility.**

- » 10-19 operators 3.5%
- » 20-29 operators 8.0%
- » 30-49 operators 16.4%
- » 50+ operators 20.8%

**Free Freight Program:** Introducing a second incentive program for you. When you order \$15,000 in HA Series product, we'll cover the freight! This program is product specific and cannot be combined with the SS8200 to reach the minimum threshold needed to receive.

## HA8-LP Series Door Operators

### Part Numbers for Standard Units (Available for Quick Ship)

Part #	Application	Finish	Header Size	List Price
WL-102-39	Left Hand Pull	Clear (CL)	39"	\$3,892.00
WL-106-39	Left Hand Pull	Bronze (BZ)	39"	\$3,892.00
WL-102-45	Left Hand Pull	Clear (CL)	45"	\$3,892.00
WL-106-45	Left Hand Pull	Bronze (BZ)	45"	\$3,892.00
WL-102-51	Left Hand Pull	Clear (CL)	51"	\$3,892.00
WL-106-51	Left Hand Pull	Bronze (BZ)	51"	\$3,892.00
WL-104-39	Right Hand Pull	Clear (CL)	39"	\$3,892.00
WL-108-39	Right Hand Pull	Bronze (BZ)	39"	\$3,892.00
WL-104-45	Right Hand Pull	Clear (CL)	45"	\$3,892.00
WL-108-45	Right Hand Pull	Bronze (BZ)	45"	\$3,892.00
WL-104-51	Right Hand Pull	Clear (CL)	51"	\$3,892.00
WL-108-51	Right Hand Pull	Bronze (BZ)	51"	\$3,892.00
WL-101-39	Push	Clear (CL)	39"	\$3,892.00
WL-105-39	Push	Bronze (BZ)	39"	\$3,892.00
WL-101-45	Push	Clear (CL)	45"	\$3,892.00
WL-105-45	Push	Bronze (BZ)	45"	\$3,892.00
WL-101-51	Push	Clear (CL)	51"	\$3,892.00
WL-105-51	Push	Bronze (BZ)	51"	\$3,892.00
WL-101-75	Pair Doors Push	Clear (CL)	75"	\$7,777.00
WL-105-75	Pair Doors Push	Bronze (BZ)	75"	\$7,777.00
WL-104-75	Pair Doors Pull	Clear (CL)	75"	\$7,777.00
WL-108-75	Pair Doors Pull	Bronze (BZ)	75"	\$7,777.00

## HA8-SP Series Door Operators



### Base package prices below include:

- » handed operator with controller
- » Arm
- » clear or dark bronze cover
- » Mounting hardware
- » Required decals to meet ANSI specifications

Unit	Application	Finish	List Price
HA8-SP (single, 39", 45" or 51")	Push or Pull	Clear or Bronze	\$4,279.00
HA8-SP (dual 75")	Push or Pull, Fits pair of 36" doors	Clear or Bronze	\$8,556.00
HA8-SP (dual 87")	Push or Pull, Fits pair of 42" doors	Clear or Bronze	\$8,556.00
HA8-SP (dual 99")	Push or Pull, Fits pair of 48" doors	Clear or Bronze	\$8,556.00
	<b>Factory Installed Upgrades</b>		
	Push and Go	Add	\$604.00
	Dual Egress Feature	Add	\$412.00
	Extended Spindle Shaft – 9-3/4"	Add	\$318.00

### Notes:

- » *Warranty: 0-24 months from the date of door operator purchase, repair or replace parts. Excludes wear parts. 25-36 months from the date of door operator purchase, parts replaced at 50% of cost, excluding wear parts.*
- » *Upgrade prices reflect a single motor/gearbox (except Dual Egress). Estimate cost accordingly.*
- » *Items in bold qualify for Quick Ship.*
- » *Standard orders will ship in 3-5 business days.*

**Power Buy Program:** We're excited to continue offering our improved quantity break program. Buying at the quantities below awards you the additional discount off of your net price. **This program is not applicable with certain buying programs. Contact your sales rep for eligibility.**

- » 10-19 operators 3.5%
- » 20-29 operators 8.0%
- » 30-49 operators 16.4%
- » 50+ operators 20.8%

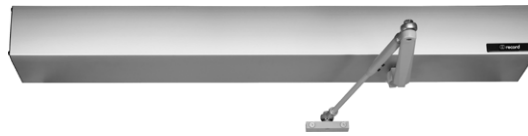
**Free Freight Program:** Introducing a second incentive program for you. When you order \$15,000 in HA Series product, we'll cover the freight! This program is product specific and cannot be combined with the SS8200 to reach the minimum threshold needed to receive.

## HA8-SP Series Door Operators

### Part Numbers for Standard Units (Available for Quick Ship)

Part #	Application	Finish	Header Size	List Price
W9-103-39	Right Hand Push	Clear (CL)	39"	\$4,279.00
W9-107-39	Right Hand Push	Bronze (BZ)	39"	\$4,279.00
W9-103-45	Right Hand Push	Clear (CL)	45"	\$4,279.00
W9-107-45	Right Hand Push	Bronze (BZ)	45"	\$4,279.00
W9-103-51	Right Hand Push	Clear (CL)	51"	\$4,279.00
W9-107-51	Right Hand Push	Bronze (BZ)	51"	\$4,279.00
W9-101-39	Left Hand Push	Clear (CL)	39"	\$4,279.00
W9-105-39	Left Hand Push	Bronze (BZ)	39"	\$4,279.00
W9-101-45	Left Hand Push	Clear (CL)	45"	\$4,279.00
W9-105-45	Left Hand Push	Bronze (BZ)	45"	\$4,279.00
W9-101-51	Left Hand Push	Clear (CL)	51"	\$4,279.00
W9-105-51	Left Hand Push	Bronze (BZ)	51"	\$4,279.00
W9-111-75	Pair Doors Push	Clear (CL)	75"	\$8,556.00
W9-112-75	Pair Doors Push	Bronze (BZ)	75"	\$8,556.00
W9-104-39	Right Hand Pull	Clear (CL)	39"	\$4,279.00
W9-108-39	Right Hand Pull	Bronze (BZ)	39"	\$4,279.00
W9-104-45	Right Hand Pull	Clear (CL)	45"	\$4,279.00
W9-108-45	Right Hand Pull	Bronze (BZ)	45"	\$4,279.00
W9-104-51	Right Hand Pull	Clear (CL)	51"	\$4,279.00
W9-108-51	Right Hand Pull	Bronze (BZ)	51"	\$4,279.00
W9-102-39	Left Hand Pull	Clear (CL)	39"	\$4,279.00
W9-106-39	Left Hand Pull	Bronze (BZ)	39"	\$4,279.00
W9-102-45	Left Hand Pull	Clear (CL)	45"	\$4,279.00
W9-106-45	Left Hand Pull	Bronze (BZ)	45"	\$4,279.00
W9-102-51	Left Hand Pull	Clear (CL)	51"	\$4,279.00
W9-106-51	Left Hand Pull	Bronze (BZ)	51"	\$4,279.00
W9-113-75	Pair Doors Pull	Clear (CL)	75"	\$8,556.00
W9-114-75	Pair Doors Pull	Bronze (BZ)	75"	\$8,556.00

## HA9 Series Door Operators



### Base package prices below include:

- » Non-handed operator with controller
- » Arm
- » One piece, clear or dark bronze cover
- » Mounting hardware
- » Required decals to meet ANSI specifications

Unit	Application	Finish	List Price
HA9 (single, 39", 45" or 51")	Push or Pull	Clear or Bronze	\$4,116.00
HA9 (dual 75", 87" or 99")	Push or Pull, Fits pair of 36", 42" or 48" doors	Clear or Bronze	\$8,229.00
Factory Installed Upgrades			
	Dual Egress Feature	Add	\$507.00
	Safety Auxiliary Board (W8-860)	Add	\$439.00
	Program Selector, 2 position (W8-857)	Add	\$140.00
	Program Selector, 4 position w/ key (W8-859)	Add	\$140.00
	Battery backup (W8-855)	Add	\$622.00
	Spindle extension (W8-865)	Add	\$131.00
	Reveal Spacer Extrusion-Black (1 9/16" x 2 3/8") (W8-863-BLK)	Add	\$50.00
	Reveal Spacer Extrusion-Silver (1 9/16" x 2 3/8") (W8-863-SL)	Add	\$50.00
	Tuxedo Black finish for single units (39", 45" or 51")	Add	\$686.00
	Tuxedo Black finish for dual units (75")	Add	\$1,410.00

### Notes:

- » **Warranty:** 0-24 months from the date of door operator purchase, repair or replace parts. Excludes wear parts. 25-36 months from the date of door operator purchase, parts replaced at 50% of cost, excluding wear parts.
- » **Upgrade prices reflect a single motor/gearbox (except Dual Egress). Estimate cost accordingly.**
- » **Items in bold qualify for Quick Ship.**
- » **Standard orders will ship in 3-5 business days.**

**Power Buy Program:** We're excited to continue offering our improved quantity break program. Buying at the quantities below awards you the additional discount off of your net price. **This program is not applicable with certain buying programs. Contact your sales rep for eligibility.**

- » 10-19 operators 3.5%
- » 20-29 operators 8.0%
- » 30-49 operators 16.4%
- » 50+ operators 20.8%

**Free Freight Program:** Introducing a second incentive program for you. When you order \$15,000 in HA Series product, we'll cover the freight! This program is product specific and cannot be combined with the SS8200 to reach the minimum threshold needed to receive.

## HA9 Series Door Operators

### Part Numbers for Standard Units (Available for Quick Ship)

Part #	Application	Finish	Header Size	List Price
HA9-102-39	Pull	Clear (CL)	39"	\$4,116.00
HA9-106-39	Pull	Bronze (BZ)	39"	\$4,116.00
HA9-102-45	Pull	Clear (CL)	45"	\$4,116.00
HA9-106-45	Pull	Bronze (BZ)	45"	\$4,116.00
HA9-102-51	Pull	Clear (CL)	51"	\$4,116.00
HA9-106-51	Pull	Bronze (BZ)	51"	\$4,116.00
HA9-102-75	Pair Pull	Clear (CL)	75"	\$8,229.00
HA9-106-75	Pair Pull	Bronze (BZ)	75"	\$8,229.00
HA9-101-39	Push	Clear (CL)	39"	\$4,116.00
HA9-105-39	Push	Bronze (BZ)	39"	\$4,116.00
HA9-101-45	Push	Clear (CL)	45"	\$4,116.00
HA9-105-45	Push	Bronze (BZ)	45"	\$4,116.00
HA9-101-51	Push	Clear (CL)	51"	\$4,116.00
HA9-105-51	Push	Bronze (BZ)	51"	\$4,116.00
HA9-101-75	Pair Push	Clear (CL)	75"	\$8,229.00
HA9-105-75	Pair Push	Bronze (BZ)	75"	\$8,229.00

## SS8200/SimpleSwing Series Door Operators



### Base package prices below include:

- » 3-year warranty from date of shipment
- » Non-handed operator with controller
- » SimpleLink Display
- » Slide Track or Standard Arm
- » Square two piece cover up to 96" DOW
- » Mounting hardware
- » Clear or dark bronze covers
- » Required decals to meet ANSI specifications
- » Arms supplied in specified unit finish

Unit/Header Size	Application/DOW (door opening width)	Finish	List Price
SS8200 (single, 39", 45" or 51")	Push or Pull, 36", 42", 48" DOW	Clear or Dark Bronze	\$5,125.00
SS8200 (dual 63", 75", 87", 99")	Push or Pull, 60", 72", 84", 96" DOW	Clear or Dark Bronze	\$10,250.00
SS8200 (dual egress 63", 75", 87", 99")	Dual Egress, 60", 72", 84", 96" DOW	Clear or Dark Bronze	\$10,570.00
Factory Installed Upgrades			
	Offset Arm (single)	Add	\$320.00
	Offset Arm (dual)	Add	\$640.00
	Single Operator in Paired Cover	Add	\$480.00

### Notes:

- » Operators can be mounted on the push or pull side of the door.
- » Slide track arm and standard arm will work on push or pull side.
- » Operators are field reversible.
- » Standard arm- limitation: 12" reveal push, 1" reveal on pull side, pull side requires 7" clearance between door frame and opposing wall.
- » Slide track arm-limitation: 3" reveal pull side, 6" reveal push side.

**Power Buy Program:** We're excited to continue offering our improved quantity break program. Buying at the quantities below awards you the additional discount off of your net price. **This program is not applicable with certain buying programs. Contact your sales rep for eligibility.**

- » 10-19 operators 3.5%
- » 20-29 operators 8.0%
- » 30-49 operators 16.4%
- » 50+ operators 20.8%

**Free Freight Program:** Introducing a second incentive program for you. When you order \$15,000 in SS8200 material, we'll cover the freight! This program is product specific and cannot be combined with the HA operators to reach the minimum threshold needed to receive.

## SS8200/SimpleSwing Series Door Operators

### Part Numbers for Standard Units

Part #	Handing	Finish	Header/DOW	List Price
SS8211C2SNN_36	LHR Standard	Clear	39"/36"	\$5,125.00
SS8211C2SNN_42	LHR Standard	Clear	45"/42"	\$5,125.00
SS8211C2SNN_48	LHR Standard	Clear	51"/48"	\$5,125.00
SS8211D2SNN_36	LHR Standard	Dark Bronze	39"/36"	\$5,125.00
SS8211D2SNN_42	LHR Standard	Dark Bronze	45"/42"	\$5,125.00
SS8211D2SNN_48	LHR Standard	Dark Bronze	51"/48"	\$5,125.00
SS8261C2S4S_72	LHR-RHR Standard	Clear	75"/72"	\$10,250.00
SS8261D2S4S_72	LHR-RHR Standard	Dark Bronze	75"/72"	\$10,250.00
SS8202C1TNN_36	LH Track	Clear	39"/36"	\$5,125.00
SS8202C1TNN_42	LH Track	Clear	45"/42"	\$5,125.00
SS8202C1TNN_48	LH Track	Clear	51"/48"	\$5,125.00
SS8202D1TNN_36	LH Track	Dark Bronze	39"/36"	\$5,125.00
SS8202D1TNN_42	LH Track	Dark Bronze	45"/42"	\$5,125.00
SS8202D1TNN_48	LH Track	Dark Bronze	51"/48"	\$5,125.00
SS8252C1T3T_72	LH-RH Track	Clear	75"/72"	\$10,250.00
SS8252D1T3T_72	LH-RH Track	Dark Bronze	75"/72"	\$10,250.00



## EZ36 Kits - Automate a 36" Door in One Box



### Kit includes:

- » (1) HA8-LP or HA9 operator
- » (2) square 4.5" push plates
- » (2) surface mount boxes
- » (2) 900 MHz transmitters
- » (1) 900 MHz receiver
- » Required decals to meet ANSI specifications

Part No.	Operator	Application	Finish	List Price
W9-200	HA8-LP	Push	Clear	\$5,457.00
W9-205	HA8-LP	Pull (left hand)	Clear	\$5,457.00
W9-210	HA8-LP	Pull (right hand)	Clear	\$5,457.00
W9-215	HA8-LP	Universal	Clear	\$5,600.00
W9-220	HA8-LP	Push	Dark Bronze	\$5,457.00
W9-225	HA8-LP	Pull (left hand)	Dark Bronze	\$5,457.00
W9-230	HA8-LP	Pull (right hand)	Dark Bronze	\$5,457.00
W9-235	HA8-LP	Universal	Dark Bronze	\$5,600.00
HA9-202CLR	HA9	Push	Clear	\$5,486.00
HA9-201CLR	HA9	Pull	Clear	\$5,486.00
HA9-202BRZ	HA9	Push	Dark Bronze	\$5,486.00
HA9-201BRZ	HA9	Pull	Dark Bronze	\$5,486.00

### Notes:

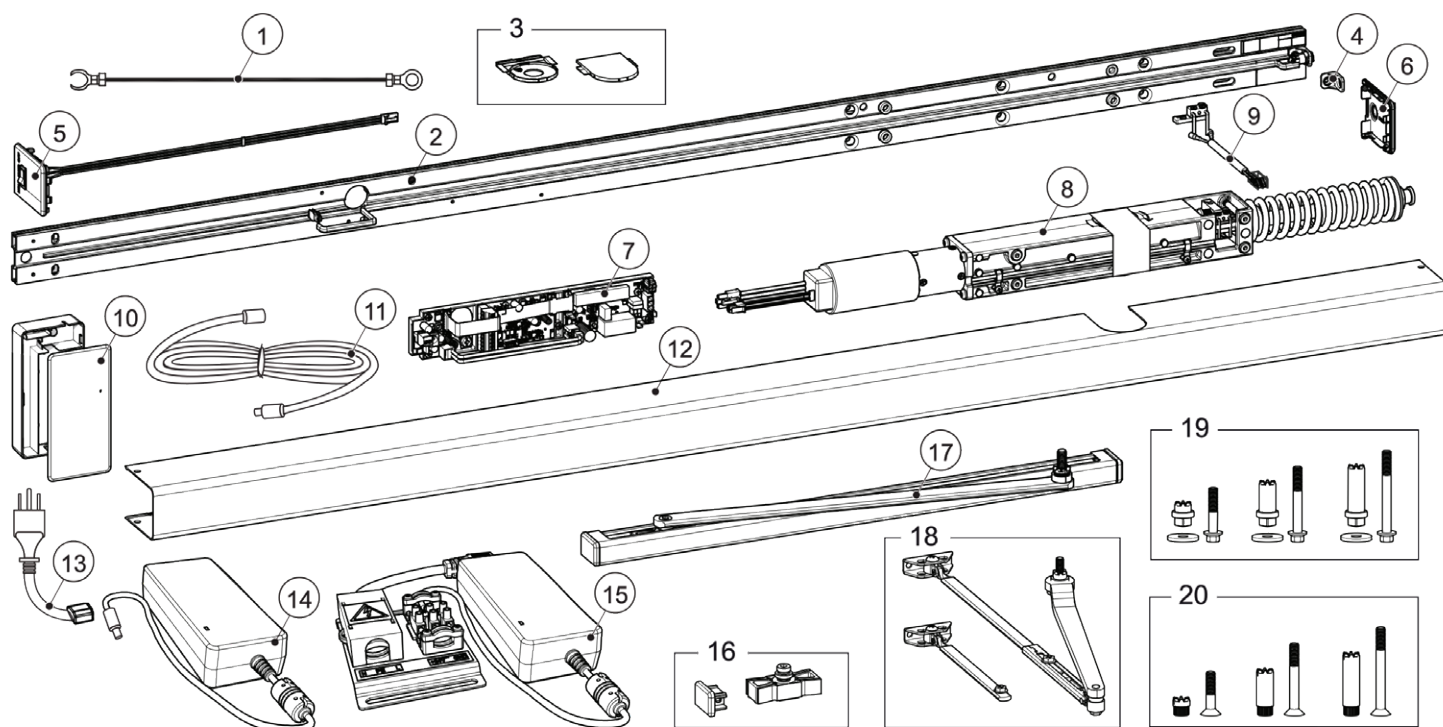
- » **Warranty:** 0-24 months from the date of door operator purchase, repair or replace parts. Excludes wear parts. 25-36 months from the date of door operator purchase, parts replaced at 50% of cost, excluding wear parts.
- » **Call to order any EZ36 in Tuxedo Black finish. Add \$686 to list price.**
- » **Push plates also available in blue with "push to open" text by request.**
- » **Items in bold qualify for Quick Ship.**

**Power Buy Program:** We're excited to continue offering our improved quantity break program. Buying at the quantities below awards you the additional discount off of your net price. **This program is not applicable with certain buying programs. Contact your sales rep for eligibility.**

- » 10-19 operators 3.5%
- » 20-29 operators 8.0%
- » 30-49 operators 16.4%
- » 50+ operators 20.8%

**Free Freight Program:** Introducing a second incentive program for you. When you order \$15,000 in HA Series product, we'll cover the freight! This program is product specific and cannot be combined with the SS8200 to reach the minimum threshold needed to receive.

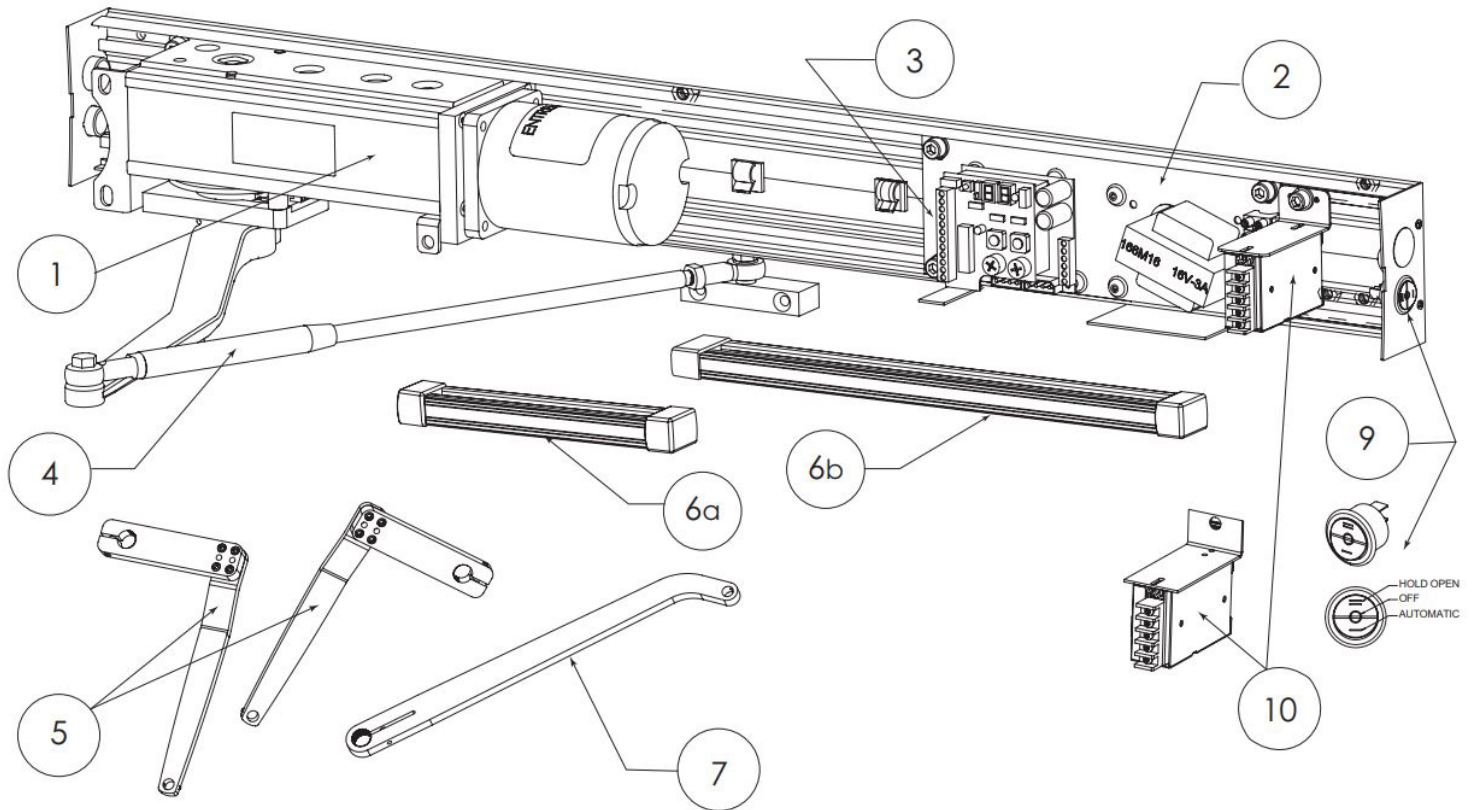
## Replacement Parts - HA7



Item	Part #	Description
1	W7-331020157	ground wire
2	W7-330000828	back plate with power cable
3	W7-331020445BK W7-331020445PD	spindle cover kit (black) spindle cover kit (grey)
4	W7-331019785	bracket power plug
5	W7-331020704BK	endplate with control switch (black)
6	W7-331020393BK	endplate (black)
7	W7-331018537	control unit (CU)
8	W7-330000841	transmission unit kit
9	W7-330000829	lock kick for push & pull
10	W7-331020253	adaptor holder
11	W7-331704236	extension power cable
12	W7-331020396DB W7-331020396NA	cover (dark bronze) cover (silver)

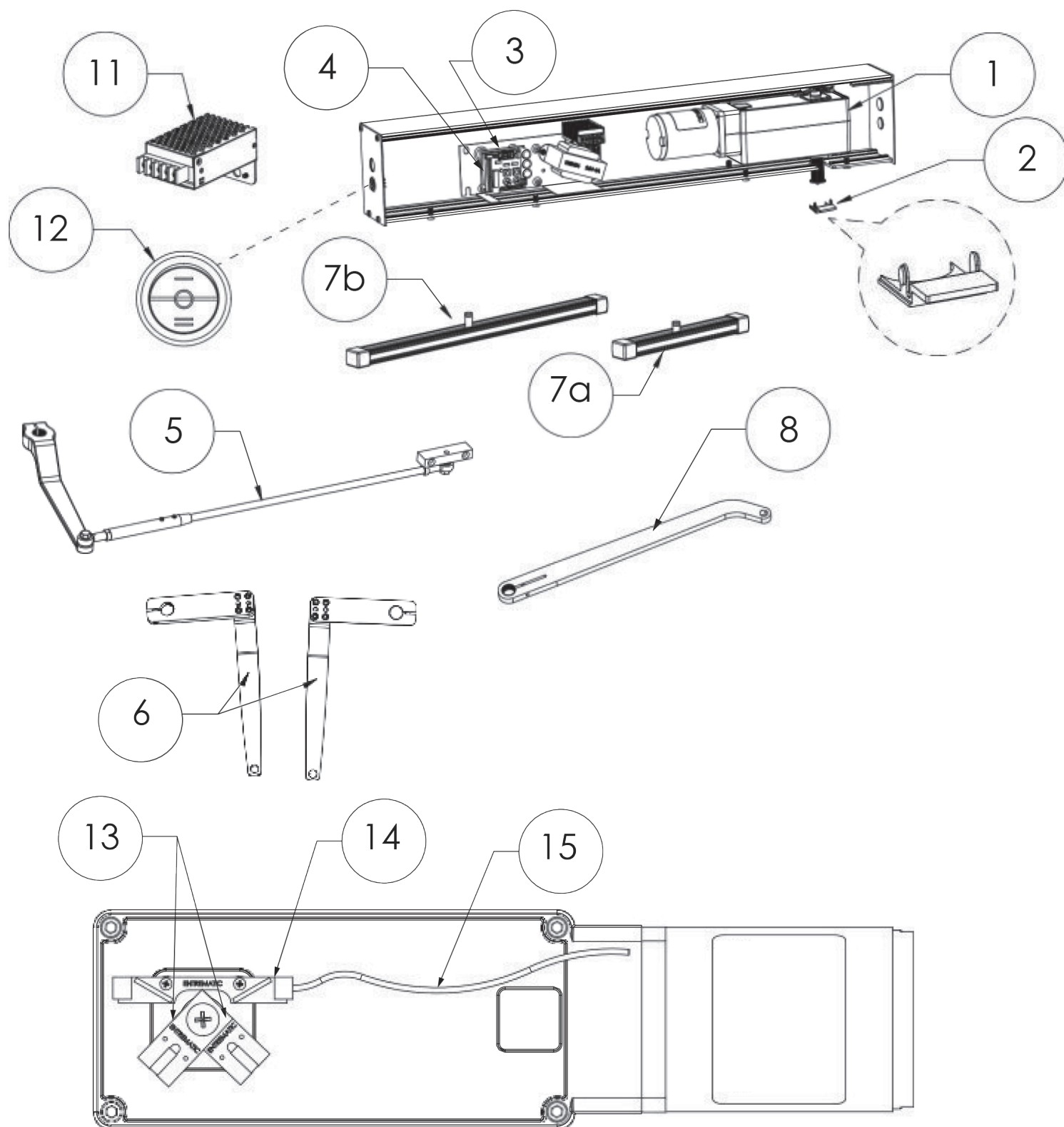
Item	Part #	Description
13	W7-331018859	power cord
14	W7-331703711	power adaptor
15	W7-331020293	power box adaptor kit (internal components only, box not included)
16	W7-330000830BK W7-330000830PD	pull arm service kit (black) pull arm service kit (grey)
17	W7-331020226BK W7-331020226PD	pull arm kit (black) pull arm kit (grey)
18	W7-331020857BK W7-331020857PD	push arm kit (black) push arm kit (grey)
19	W7-330000831BK	drive shaft kits for PUSH arm (black)
20	W7-330000832BK	drive shaft kits for PULL arm (black)

## Replacement Parts - HA8-LP



Item	Category	Part #	Description	Item	Category	Part #	Description
1	Operators	WL-PA03	LP Operator	6a	Arm	W5-550	Pull track assembly-clear
2	Controls	W7-130-1	Digital Control Board			W5-555	Pull track assembly-bronze
3	Controls	W5-422	Fuse 3amp digital	6b	Arms	W5-551	Pull track assembly long-clear (univ arm)
4	Arms	W7-200	complete push arm-clear			W5-556	Pull track assembly long-bronze (univ arm)
5	Arms	W5-506C	Z Arm-RH-Clear	7	Arms	W5-512C	Universal Arm-clear
		W5-505C	Z Arm-LH-Clear			W5-512B	Universal Arm-bronze
		W5-506B	Z Arm-RH-Bronze	9	Misc	WL-Rocker switch	On-Off-Hold Open 3-position switch
		W5-505B	Z Arm-LH-Bronze				
		W5-508C	Extended Z Arm-RH-Clear	10	Misc	WL-PWRKIT	RS-25-24 Power Supply Kit
		W5-507C	Extended Z Arm-LH-Clear				
		W5-508B	Extended Z Arm-RH-Black				
		W5-507B	Extended Z Arm-LH-Black				

## Replacement Parts - HA8-SP

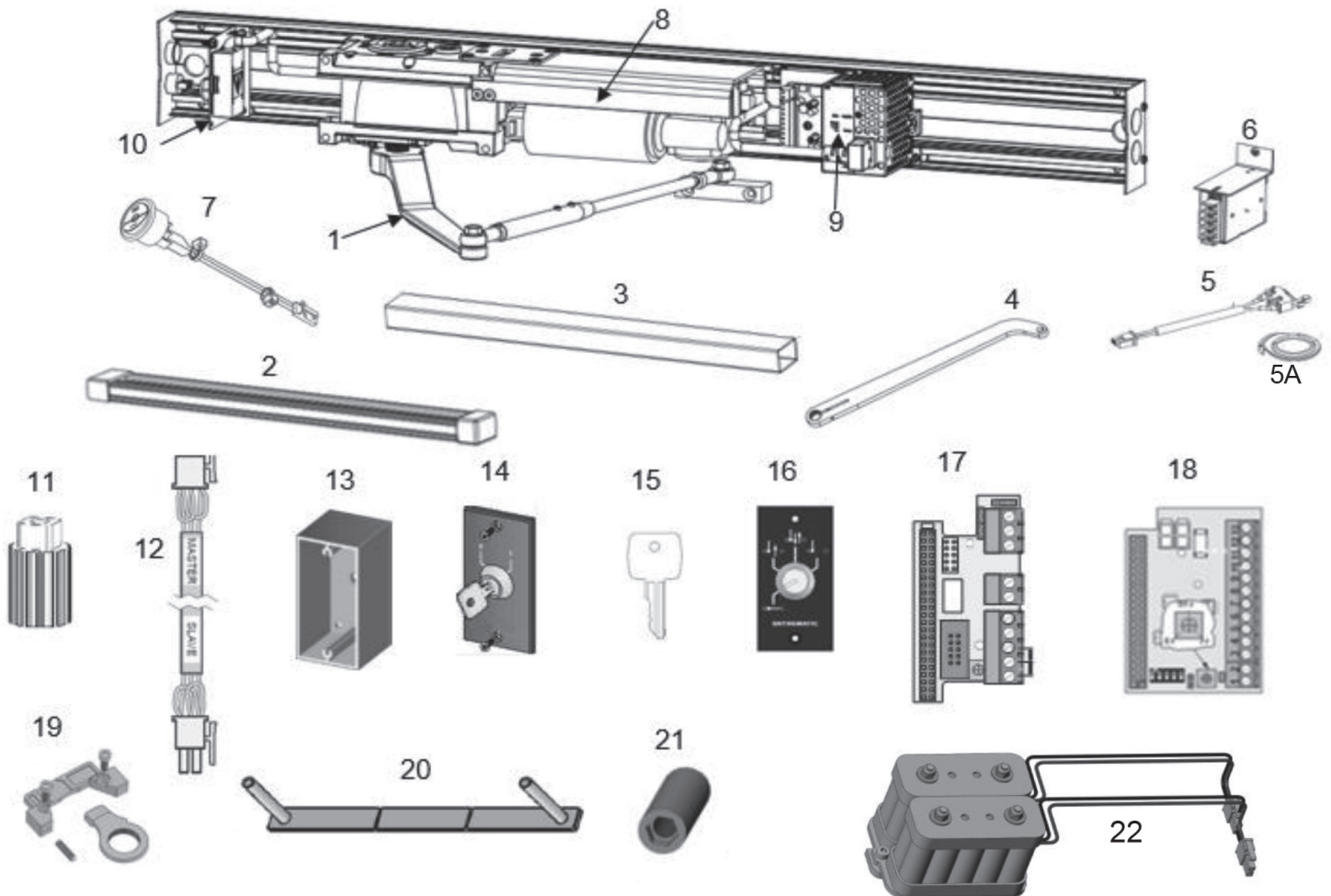


## Replacement Parts - HA8-SP

Item	Category	Part #	Description	Item	Category	Part #	Description	
1	Operators	W7-105L	LH 1/8 hp operator	7a	Pull Arm Track - short (for z arm)	W5-550	Pull track assembly - clear	
		W7-105R	RH 1/8 hp operator			W5-555	Pull track assembly - bronze	
		W7-106L	LH 1/8 hp, push & go operator	7b	Pull Arm Track - long (for Universal/Center Spindle)	W5-551	Pull track assembly long-clear (for Univ/Center Spindle)	
		W7-106R	RH 1/8 hp, push & go operator			W5-556	Pull track assembly long-bronze (for Univ/Center Spindle)	
2	Header Cap	W5-557	Header Plastic Cap	8	Universal Arm	W5-512C	Universal Arm-clear	
3	Control Board	W7-130-1	HA Digital Control Board			W5-512B	Universal Arm-bronze	
4	Fuses	W5-422	3amp fuse (HA8)		11	AUX Power Supply Kit (optional)	WL-PWRKIT	RS-25-24 Power supply kit
		W5-430	4amp fush (FA8)					
5	Push Arm	W7-200	complete push arm-clear	12	Rocker Switch	WL-ROCKER-SWITCH	On/off/hold open 3 position switch	
		W7-205	complete push arm-bronze					
		W5-502C	cast portion only- clear	13	Magnet Sets	W5-416	magnet set, detects back check and latch check phases	
		W5-502B	cast portion only-bronze					
6	Z Arm (Pull)	W5-506C	Z Arm-RH-Clear	14	Reed Switch	W5-415	reed switch & harness; communicates to control board the position of door	
		W5-505C	Z Arm-LH-Clear					
		W5-506B	Z Arm-RH-Bronze	15	Harness Cable	W5-415-2	Communicates to control board the position of door	
		W5-505B	Z Arm-LH-Bronze					
		W5-508C	Ext Z Arm-RH-Clear					
		W5-508B	Ext Z Arm-RH-Black					
		W5-507C	Ext Z Arm-LH-Clear					
		W5-507B	Ext Z Arm-LH-Black					
5	Arms	W5-506C	Z Arm-RH-Clear					
		W5-505C	Z Arm-LH-Clear					
		W5-506B	Z Arm-RH-Bronze					
		W5-505B	Z Arm-LH-Bronze					
		W5-508C	Extended Z Arm-RH-Clear					
		W5-507C	Extended Z Arm-LH-Clear					
		W5-508B	Extended Z Arm-RH-Black					
		W5-507B	Extended Z Arm-LH-Black					



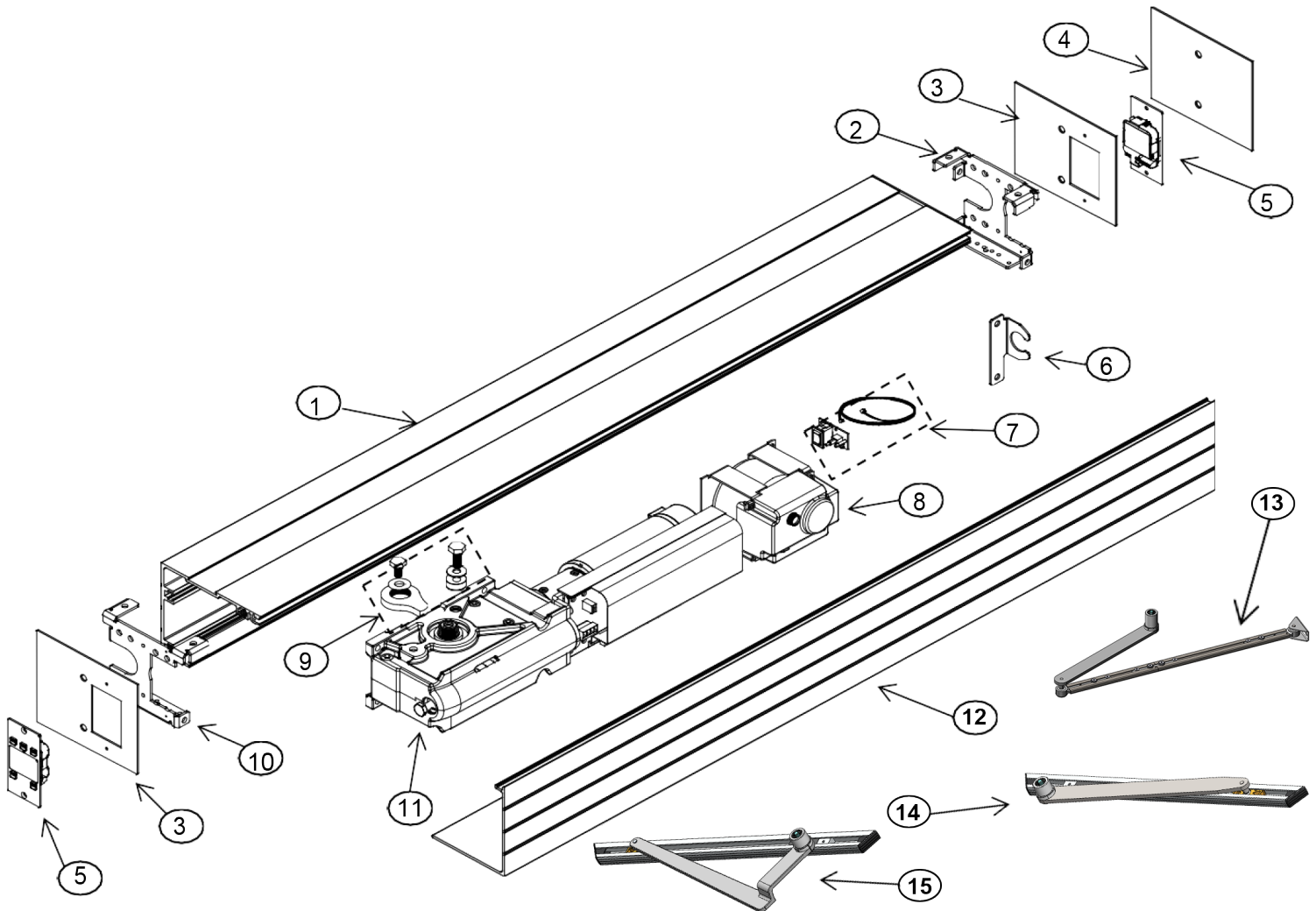
## Replacement Parts - HA9



## Replacement Parts - HA9

Item	Category	Part #	Description	Item	Category	Part #	Description
1	Push Arm	W7-200	complete push arm-clear (17.5" rod)	7	Rocker Switch	W8-804	on/off/hold open 3-position switch
		W7-205	complete push arm-bronze (17.5" rod)	8	Motor/Gearbox	W8-801	motor/gearbox kit
		W5-502C	cast portion- clear	9	Controls	W8-802	HA9 Controller
		W5-502B	cast portion- bronze	10	Conduit	W8-803	Conduit bracket kit
		W5-500C	22" extended rod- clear	11	Shaft Adaptor	W8-805	Shaft adaptor
		W5-500B	22" extended rod-bronze	12	Sync Cable	W8-850	sync cable for pair units
2	Pull Arm Track-Long	W5-551	pull track assembly long-clear	13	Program Selector	W8-856	surface mount box
		W5-556	pull track assembly long-bronze	14		W8-857	2 pos., psk-2
3	Reveal Spacer Extrusion (1-9/16" x 2-3/8")	W8-863-BLK	Spacer Assy - black	15		W8-858	spare key psk/ps-4c
		W8-863-SL	Spacer Assy- silver	16		W8-859	4 pos, w/ key PS-4C
4	Pull Arm	W5-512C	pull arm-clear	17	Extension Units	W8-860	EXU-SA
		W5-512B	pull arm-bronze	18		W8-861	EXU-SI
5	Micro Switch Kit	W8-852	lock kick switch & cam (includes 5A)	19	Stop Arm Kit	W8-851	Stop Arm Kit
5A	Lock Kick	W8-864	lock kick cam	20	Lock Spacer Kit	W8-853	Lock Spacer Kit
6	Power Supply Kit	WL-PWRKIT	RS-25-24 power supply kit	21	Allen Key Head Nut Kit	W8-854	Allen Key Head Nut Kit
				22	Battery backup	W8-855	Optional battery backup

## Replacement Parts - SS8200



Item	Part #	Description	Item	Part #	Description
1	5-85-4003-CL	Header, Clear	10	202-005121578	Bracket, Header to Jamb, BDE-D, SS8200, LH
	5-85-4003-DB	Header, Dark Bronze			
2	202-005121579	Bracket, Header to Jamb, BDE-D, SS8200, RH	11	9-80-0101	Drive Module w/ Control, SS8200
3	202-005121570	End Cap, Header, 8000, BDE-D Cutout, SS8200	12	5-85-4004-CL	Cover, Clear
4	4-85-1011	End Cap, Header (blank)		5-85-4004-DB	Cover, Dark Bronze
5	9-99-1321	Control Module, Display	13	102-127816028	Standard Arm Assembly, Clear
6	4-51-1004	Bracket, Conduit Anchor		102-127816110	Standard Arm Assembly, Dk Bronze
7	9-80-0106	Kit, Rocker Switch Assembly w/ Cable	14	102-127816079	Slide Track Arm Assembly, Clear
8	9-80-0102	Power Supply		102-127816111	Slide Track Arm Assembly, Dk Bronze
9	9-80-0103	Kit, Hard Stop	15	102-127816085	Offset Arm Assembly, Clear
				102-127816112	Offset Arm Assembly, Dk Bronze

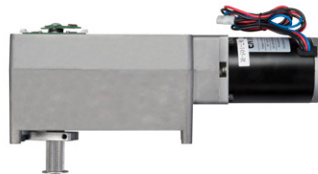


## Replacement – Spare Parts



### Controls

Part No.	Description	List Price
W7-331018537	HA7 Control Unit	\$910.00
W8-802	HA9 Controller	\$1,290.00
W7-130-1	Digital Control Board for SP & LP with Universal Mounting Bracket	\$649.00
9-80-0101	SS8200 Drive Module with Control	\$3,974.10
9-99-1321	SS8200 Control Module Display	\$641.10
W5-422	3 Amp Fuses – Std Controls, Long, Digital (6 pack)	\$37.00



### Operators

Part No.	Description	List Price
W7-330000841	HA7 Transmission Unit	\$862.00
W8-801	HA9 Motor/Gearbox	\$2,642.00
WL-PA03	HA8-LP Operator – Non-Handed with Standard Spring	\$1,844.00
W7-105L	HA8-SP Operator with standard spring (left hand) (fits SP models after 12/1/17)	\$2,083.00
W7-105R	HA8-SP Operator with standard spring (right hand) (fits SP models after 12/1/17)	\$2,083.00



## Arms

Part No.	Description	List Price
W7-200	Push Arm Complete -Clear (up to 14" reveal)	\$446.00
W7-205	Push Arm Complete - Bronze (up to 14" reveal)	\$446.00
W5-502B	Push Arm, Main Arm Only- Bronze	\$218.00
W5-502C	Push Arm, Main Arm Only - Clear	\$218.00
W5-505B	Z/Pull Arm Left - Bronze (for complete assembly order track below) (4" reveal)	\$390.00
W5-506B	Z/Pull Arm Right - Bronze (for complete assembly order track below) (4" reveal)	\$390.00
W5-555	Pull Arm Track Assembly (11-3/8" w/ endcaps) for 90 Degree Arm - Bronze	\$105.00
W5-505C	Z/Pull Arm Left - Clear (for complete assembly order track below) (4" reveal)	\$390.00
W5-506C	Z/Pull Arm Right-Clear (for complete assembly order track below) (4" reveal)	\$390.00
W5-550	Pull Arm Track Assembly (11-3/8" w/endcaps) for 90 Degree Arm - Clear	\$105.00
W5-512B	Universal Arm - Bronze (for complete assy order track below) (4" reveal)	\$352.00
W5-512C	Universal Arm - Clear (for complete assembly order track below) (4" reveal)	\$352.00
W5-556	Pull Arm Track Assembly (22") for Universal Arm - Bronze	\$160.00
W5-551	Pull Arm Track Assembly (22") for Universal Arm - Clear	\$160.00
W5-500C	Extended Push Arm Rod (up to 18" reveal) (additional) - Clear	\$95.00
W5-500B	Extended Push Arm Rod (up to 18" reveal) (additional) - Bronze	\$95.00
W5-507C	Extended Pull Arm for Left Hand (up to 8" reveal) - Clear	\$296.00
W5-507B	Extended Pull Arm for Left Hand (up to 8" reveal) - Black	\$296.00
W5-508C	Extended Pull Arm for Right Hand (up to 8" reveal) - Clear	\$296.00
W5-508B	Extended Pull Arm for Right Hand (up to 8" reveal) - Black	\$296.00
W7-330000830BK	HA7 Pull Arm Service Kit - Black	\$31.00
W7-330000830PD	HA7 Pull Arm Service Kit - Grey	\$31.00
W7-331020226BK	HA7 Pull Arm Kit - Black	\$113.00
W7-331020226PD	HA7 Pull Arm Kit - Grey	\$113.00
W7-331020857BK	HA7 Push Arm Kit - Black	\$141.00
W7-331020857PD	HA7 Push Arm Kit - Grey	\$141.00
W7-330000831BK	HA7 Drive Shaft kits for PUSH arm (black)	\$65.00
W7-330000832BK	HA7 drive shaft kits for PULL arm (black)	\$65.00
102-127816028	SS8200 Standard Arm Assembly - Clear	\$606.36
102-127816110	SS8200 Standard Arm Assembly - Dark Bronze	\$724.15
102-127816079	SS8200 Track Arm Assembly - Clear	\$934.67
102-127816111	SS8200 Track Arm Assembly - Dark Bronze	\$938.08
102-127816085	SS8200 Offset Arm Assembly - Clear	\$934.67
102-127816112	SS8200 Offset Arm Assembly - Dark Bronze	\$938.08




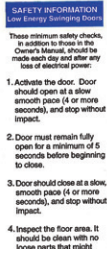
## Miscellaneous

Part No.	Description	List Price
WL-P0108	HA8-LP Extended Spindle Shaft (1-1/2" Extension)	\$147.00
WL-P0109	HA8-LP Extended Spindle Shaft (3" Extension)	\$147.00
W8-803	Conduit Bracket Assembly for HA9	\$130.00
W8-850	Sync Cable for HA9 pair operators	\$132.00
W8-851	Door Stop with Stop Block Kit for HA9	\$130.00
W8-852	Micro Switch Kit with cam for HA9	\$68.00
W8-864	Lock Kick Cam	\$14.00
W8-853	Lock Spacer Kit	\$15.00
W8-854	Allen Key Head Nut Kit	\$8.00
W8-855	Battery Backup for HA9	\$622.00
W8-805	Shaft Adaptor for HA9	\$86.00
W8-860	EXU-SA (safety auxiliary board for HA9)	\$439.00
W8-861	EXU-SI (security auxiliary board for HA9)	\$531.00
W8-863-BLK	Reveal Spacer Assembly - black (1 9/16"x 2 3/8")	\$50.00
W8-863-SL	Reveal Spacer Assembly - silver (1 9/16"x 2 3/8")	\$50.00
W5-415	Reed Switch for SP	\$105.00
WL-P0068	Reed Switch for LP	\$105.00
W5-415-1	Reed Switch Harness (both HA Standard and Low Profile)	\$29.00
W5-415-2	Reed Switch Harness Extension (both HA standard and low profile)	\$40.00
W5-416	Reed Switch Magnets for SP (Back Check)	\$29.00
W5-409	On/Off/Hold Open Switch (for SP and FA units prior to 11/30/17)	\$86.00
WL-ROCKER	3-Way Rocker Switch (On/Off/Hold Open for SP & LP units)	\$24.00
W8-804	3-Way Rocker Switch (On/Off/Hold Open, 3-position switch for HA9)	\$53.00
W8-856	Surface Mount Box Program Selector	\$41.00
W8-857	Program Selector, 2 position, PSK-2	\$140.00
W8-858	Spare Key PSK/PS-4C	\$17.00

## Miscellaneous (continued...)

Part No.	Description	List Price
W8-859	Program Selector, 4 position w/ key PS-4C	\$140.00
WL-PWRKIT	24 VDC-1.1 amp Aux Power Supply Kit with mounting bracket	\$508.00
W5-528C	Aluminum reinforcement bracket for aluminum storefronts where no backing exists (clear)	\$137.00
W5-528B	Aluminum reinforcement bracket for aluminum storefronts where no backing exists (black)	\$137.00
W7-331020157	HA7 Ground Wire	\$19.00
W7-330000828	HA7 Back Plate with Power Cable	\$53.00
W7-331020445BK	HA7 Spindle Cover Kit (black)	\$10.00
W7-331020445PD	HA7 Spindle Cover Kit (grey)	\$10.00
W7-331019785	HA7 Bracket Power Plug	\$7.00
W7-331020704BK	HA7 Endplate with Control Switch (black)	\$41.00
W7-331020393BK	HA7 Endplate (black)	\$19.00
W7-330000829	HA7 Lock Kick for Push & Pull	\$41.00
W7-331020253	HA7 Adaptor Holder	\$49.00
W7-331704236	HA7 Extension Power Cable	\$39.00
W7-331020396DB	HA7 Cover (dark bronze)	\$47.00
W7-331020396NA	HA7 Cover (silver)	\$47.00
W7-331018859	HA7 Power Cord	\$24.00
W7-331703711	HA7 Power Adaptor	\$120.00
W7-331020293	HA7 Power Box Adaptor Kit (internal components only, box not included)	\$214.00
5-85-4003-CL	SS8200 Header - Clear	\$61.84/ft
5-85-4003-DB	SS8200 Header - Dark Bronze	\$65.08/ft
202-005121579	SS8200 Bracket, Header to Jamb, BDE-D, RH	\$31.28
202-005121578	SS8200 Bracket, Header to Jamb BDE-D, LH	\$31.28
202-005121570	SS8200 End Cap, Header with BDE-D Cut-Out	\$36.48
4-85-1011	SS8200 End Cap, Header (blank)	\$27.21
4-51-1004	SS8200 Bracket, Conduit Anchor	\$12.14
9-80-0106	SS8200 Rocker Switch Assembly w/ Cable	\$220.20
9-80-0102	SS8200 Power Supply	\$791.67
9-80-0103	SS8200 Hard Stop Kit	\$231.80
5-85-4004-CL	SS8200 Cover - Clear	\$31.75/ft
5-85-4004-DB	SS8200 Cover - Dark Bronze	\$33.11/ft

## Decals

Part No.	Description	Image	List Price
W5-628	Caution Automatic Door/Activate Switch to Operate combo decal		\$24.00
W5-626	Record logo "Dome" label		\$18.00
W5-625	Low Energy AAADM Decal		\$18.00

### Notes:

- » Replacement Parts Warranty. Limited 1 Year from Ship Date. See Warranty Statement.
- » \$50 Minimum order required.
- » 45% Restocking fee.
- » \$15 drop ship fee.
- » Products listed in bold qualify for the Quick Ship Program. See program details on page 6.