

IX Series | Peer-to-Peer IP Video Intercom Components and Accessories



STATIONS



Mix and match an unlimited number of master, sub, door, and emergency stations.

Box Set



IXS-HBDV

Box Set with IX-DV, IX-MV7-HB, PoE Switch, and USB Drive

- Preprogrammed equipment is ready to install
- PoE switch allows for easy expansion
- USB drive includes back-up programming files and how-to videos for future growth

Master Stations and PC Software



IX-MV7-HB-L
IP Video Master Station with T-Coil Supported Handset



IX-MV7-HB
IP Video Master Station (included with IXS-HBDV box set - available soon)



IX-MV7-HW-JP
IP Video Master Station (TAA-compliant)



IX-MV7-B
IP Video Master Station



IX-MV7-W
IP Video Master Station

Shared Features:

- PoE
- SIP compliant
- 7" LCD touchscreen
- Eight speed-dial buttons
- Camera for two-way video calls
- Hands-free communication (IX-MV7-HB, IX-MV7-HB-L, and IX-MV7-HW-JP have a handset for privacy)
- On-board recording with a microSD™ card
- Wall or desk mount (stand included)



IXW-MA-SOFT
PC Master Station Software via Multi-Purpose Adaptor

IXW-MA-SOFT-5
(5 IX-SOFT licenses)

IXW-MA-SOFT-10
(10 IX-SOFT licenses)



IX-SOFT
PC Master Station Software via USB Dongle

IX-SOFT-3
(includes 3 USB dongles)

IX-SOFT-5
(includes 5 USB dongles)

IX-SOFT-10
(includes 10 USB dongles)

Sub Stations



IX-RS-W
Audio Room Sub Station



IX-RS-B
Audio Room Sub Station

Shared Features:

- PoE
- SIP compliant
- Hands-free communication or handset for privacy
- Internal communication with other sub stations
- 2W external speaker output for communication or paging
- Wall mount

Door Stations



IX-EA
IP Video Door Station

- PoE
- SIP compliant
- Fixed camera
- On-board recording with a microSD™ card
- Plastic chassis
- Weather resistant
- Surface mount



IX-DVM
Mullion-Mount IP Video Door Station

- PoE
- SIP compliant
- Fixed WDR camera
- Built-in touchless call sensor
- On-board recording with a microSD™ card
- Aluminum die cast cover
- Weather and vandal resistant
- Surface mount



IX-DV
IP Video Door Station (included with IXS-HBDV box set - available soon)

- PoE
- SIP compliant
- Fixed camera
- On-board recording with a microSD™ card
- Aluminum die cast cover
- Weather and vandal resistant
- Surface mount



IX-DVF
IP Video Door Station

- Fixed camera
- On-board recording with a microSD™ card
- Stainless steel panel
- Vandal resistant
- Flush mount (back box included)



IX-DVF-L
IP Video Door Station with T-Coil Compatibility

- PoE
- SIP compliant
- Fixed camera
- On-board recording with a microSD™ card
- Stainless steel panel
- Weather and vandal resistant
- Flush mount (back box included)



IX-DVF-HW
IP Video Door Station with Hand Wave Call Sensor and Surface Mount Box

- PoE+
- SIP compliant
- Fixed camera
- On-board recording with a microSD™ card
- Stainless steel panel
- Weather and vandal resistant
- Surface mount



IX-DVF-4
IP Video Door Station

- PoE
- SIP compliant
- Fixed camera
- Four call buttons
- On-board recording with a microSD™ card
- Stainless steel panel
- Flush mount (back box included)



IX-SSA
IP Audio Door Station

- PoE
- SIP compliant
- On-board recording with a microSD™ card
- Stainless steel panel
- Vandal resistant
- Flush mount (back box included)



IX-SS-2G
IP Audio Door Station

- PoE
- SIP compliant
- Stainless steel panel
- Vandal resistant
- Flush mount (fits 2-gang box)



IX-NVP
IP Audio Door Station

- PoE
- SIP compliant
- Powder-coated steel panel
- Weather and vandal resistant
- Flush mount (fits 3-gang box)



IX-NVP2
IP Audio Door Station

- PoE
- SIP compliant
- Two call buttons
- Powder-coated steel panel
- Weather and vandal resistant
- Flush mount (fits 3-gang box)

Emergency Stations



IX-DVF-2RA / IX-DVF-RA

ADA Compliant IP Video Emergency Station
(IX-DVF-2RA has two call buttons, IX-DVF-RA has one call button)

Shared Features:

- PoE (with passthrough port) or 24V DC
- SIP compliant
- On-board recording with microSD™ card

Stations also available with French labels:
IX-DVF-2RA-FR,
IX-DVF-RA-FR,
IX-SSA-2RA-FR,
IX-SSA-RA-FR

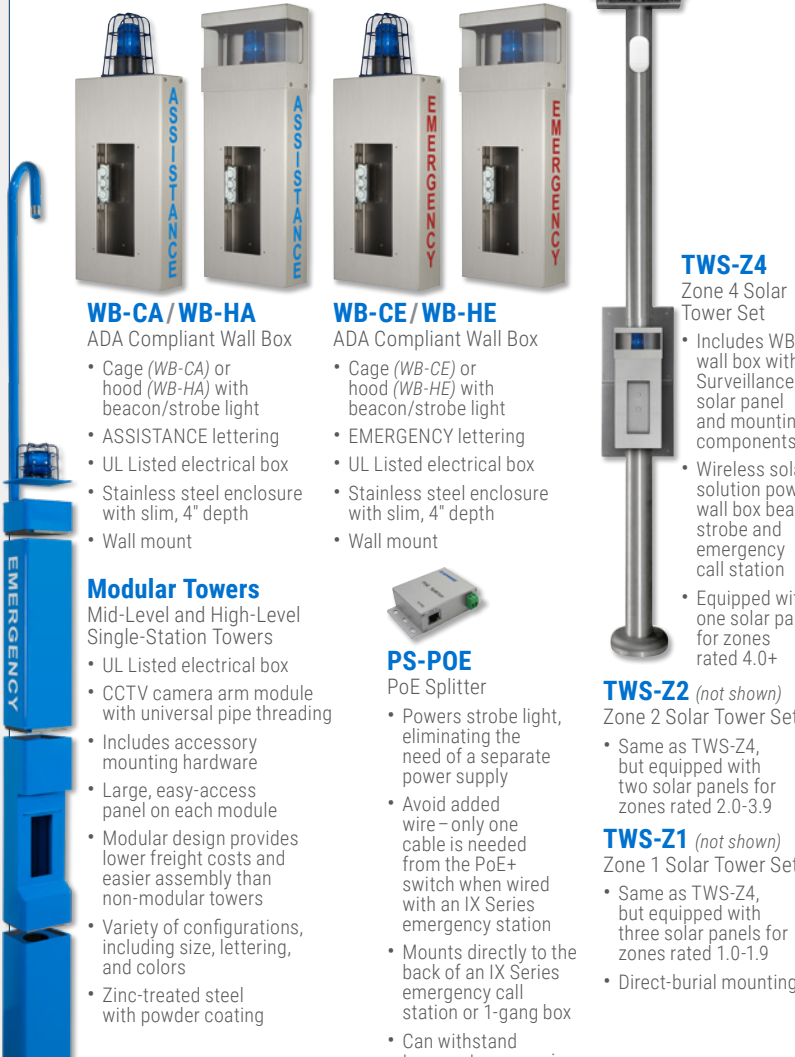


IX-SSA-2RA / IX-SSA-RA

ADA Compliant IP Audio Emergency Station
(IX-SSA-2RA has two call buttons, IX-SSA-RA has one call button)

- Lettering and braille signage
- LED call status indicator
- Two Form C relay outputs
- Stainless steel panel
- Weather and vandal resistant
- Flush mount (back box included)

Emergency Wall Boxes and Towers



WB-CA / WB-HA

ADA Compliant Wall Box

- Cage (WB-CA) or hood (WB-HA) with beacon/strobe light
- ASSISTANCE lettering
- UL Listed electrical box
- Stainless steel enclosure with slim, 4" depth
- Wall mount

WB-CE / WB-HE

ADA Compliant Wall Box

- Cage (WB-CE) or hood (WB-HE) with beacon/strobe light
- EMERGENCY lettering
- UL Listed electrical box
- Stainless steel enclosure with slim, 4" depth
- Wall mount

TWS-Z4

Zone 4 Solar Tower Set

- Includes WB-HE wall box with Sun Surveillance's solar panel and mounting components
- Wireless solar solution powers wall box beacon/strobe and emergency call station
- Equipped with one solar panel for zones rated 4.0+

TWS-Z2 (not shown)

Zone 2 Solar Tower Set

- Same as TWS-Z4, but equipped with two solar panels for zones rated 2.0-3.9

TWS-Z1 (not shown)

Zone 1 Solar Tower Set

- Same as TWS-Z4, but equipped with three solar panels for zones rated 1.0-1.9
- Direct-burial mounting



PS-POE

PoE Splitter

- Powers strobe light, eliminating the need of a separate power supply
- Avoid added wire – only one cable is needed from the PoE+ switch when wired with an IX Series emergency station
- Mounts directly to the back of an IX Series emergency call station or 1-gang box
- Can withstand temperatures ranging from -40 to 140° F

Modular Towers

Mid-Level and High-Level Single-Station Towers

- UL Listed electrical box
- CCTV camera arm module with universal pipe threading
- Includes accessory mounting hardware
- Large, easy-access panel on each module
- Modular design provides lower freight costs and easier assembly than non-modular towers
- Variety of configurations, including size, lettering, and colors
- Zinc-treated steel with powder coating

Adaptors



IXW-MA

IP Relay Adaptor

- Compatibility with IX Support Tool makes programming efficient – no need to program adaptors separately
- PoE
- 4 contact inputs
- 10 relay outputs



IPW-1VC

2-Wire Network Adaptor (includes power supply)

- Upgrade 2-wire analog systems to an IP video intercom
- Use existing wire – up to 1,000' (18-22AWG shielded, unshielded)
- PoE
- Compact design is small enough to fit behind most door or sub stations



IXW-PBX

IP PBX for IX Series

- Supports up to 500 registered SIP devices and up to 50 concurrent calls
- Dual Gigabit network ports with integrated PoE+
- Built-in call recording server; recordings accessed via web interface



IPW-VPN

VPN Router

- Secure communication via encrypted tunnel
- Supports 30Mbps
- Supports broadcast and multicast
- Supports mesh applications
- Simple installation

Accessories



IXW-HWCBP

Hand Wave Call Sensor and Surface Mount Box



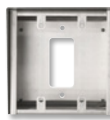
IX-MB

Mullion Mounting Bracket for IX-DV



SBX-IXDV30

30° Angle Box for IX-DV



SBX-2G/A

Surface Mount Box for IX-SS-2G



SBX-IDVF

Surface Mount Box for IX-DVF or IX-SSA



SBX-IDVFA

Surface Mount Box for IX-DVF-2RA, IX-DVF-2RA-FR, IX-DVF-4, IX-DVF-L, IX-DVF-RA, IX-DVF-RA-FR, IX-SSA-2RA, IX-SSA-2RA-FR, IX-SSA-RA, or IX-SSA-RA-FR



TW-SPL

Tower Mounting Plate for IX-DVF or IX-SSA

(adapts standard door station to an Aiphone tower or wall box)



MB-RF1

Retrofit Mounting Bracket for IX-DVF-L, IX-DVF-P, IX-DVF-2RA, IX-DVF-RA, IX-SSA-2RA, or IX-SSA-RA

(adapts station to an existing Code Blue® or Talk-A-Phone® tower or wall box)

Code Blue® is a registered trademark of Code Blue Corporation. Talk-A-Phone® is a registered trademark of Talkaphone LLC.



TW-MKL

L-Bolt Mounting Kit for Modular Towers (an L-bolt mounting kit is required for tower installation – TW-MKL is recommended)